

PARTS LIST

CAUTION

- The parts identified by the \triangle symbol are important for the safety. Whenever replacing these parts, be sure to use specified ones to secure the safety.
- The parts not indicated in this Parts List and those which are filled with lines — in the Parts No. columns will not be supplied.
- P. W. Board Ass'y will not be supplied, but those which are filled with the Parts No. in the Parts No. columns will be supplied.

ABBREVIATIONS OF RESISTORS, CAPACITORS AND TOLERANCES

RESISTORS		CAPACITORS	
C R	Carbon Resistor	C CAP.	Ceramic Capacitor
F R	Fusible Resistor	E CAP.	Electrolytic Capacitor
P R	Plate Resistor	M CAP.	Mylar Capacitor
V R	Variable Resistor	HV CAP.	High Voltage Capacitor
HV R	High Voltage Resistor	MF CAP.	Metalized Film Capacitor
MF R	Metal Film Resistor	MM CAP.	Metalized Mylar Capacitor
MG R	Metal Glazed Resistor	MP CAP.	Metalized Polystyrol Capacitor
MP R	Metal Plate Resistor	PP CAP.	Polypropylene Capacitor
OM R	Metal Oxide Film Resistor	PS CAP.	Polystyrol Capacitor
CMF R	Coating Metal Film Resistor	TF CAP.	Thin Film Capacitor
UNF R	Non-Flammable Resistor	MPP CAP.	Metalized Polypropylene Capacitor
CH V R	Chip Variable Resistor	TAN. CAP.	Tantalum Capacitor
CH MG R	Chip Metal Glazed Resistor	CH C CAP.	Chip Ceramic Capacitor
COMP. R	Composition Resistor	BP E CAP.	Bi-Polar Electrolytic Capacitor
LPTC R	Linear Positive Temperature Coefficient Resistor	CH AL E CAP.	Chip Aluminum Electrolytic Capacitor
		CH AL BP CAP.	Chip Aluminum Bi-Polar Capacitor
		CH TAN. E CAP.	Chip Tantalum Electrolytic Capacitor
		CH AL BP E CAP.	Chip Tantalum Bi-Polar Electrolytic Capacitor

TOLERANCES									
F	G	J	K	M	N	R	H	Z	P
±1%	±2%	±5%	±10%	±20%	±30%	+30% -10%	+50% -10%	+80% -20%	+100% -0%

CONTENTS


■ USING PW BOARD & REMOTE CONTROL UNIT	34
■ REMOTE CONTROL UNIT PARTS LIST	35
■ EXPLODED VIEW PARTS LIST	36
■ EXPLODED VIEW	37
■ PRINTED WIRING BOARD PARTS LIST	
[AV-21F3]	
● MAIN PW BOARD ASS'Y (SCG-1411A-H2) (With CRT SOCKET PW BOARD)	38
[AV-21FR3]	
● MAIN PW BOARD ASS'Y (SCG-1402A-H2) (With CRT SOCKET PW BOARD)	42
[AV-21FMG3B]	
● MAIN PW BOARD ASS'Y (SCG-1432A-H2) (With CRT SOCKET PW BOARD)	46
■ PACKING PARTS LIST	50
■ PACKING	51

USING PW BOARD & REMOTE CONTROL UNIT


Model \ PWB ASS'Y	MAIN PWB	REMOTE CONTROL UNIT
AV-21F3	SCG-1411A-H2	RM-C364GY-1H
AV-21FR3	SCG-1402A-H2	RM-C90-1H
AV-21FMG3B	SCG-1432A-H2	RM-C364-1H

REMOTE CONTROL UNIT PARTS LIST


[AV-21F3] (RM-C364GY-1H)

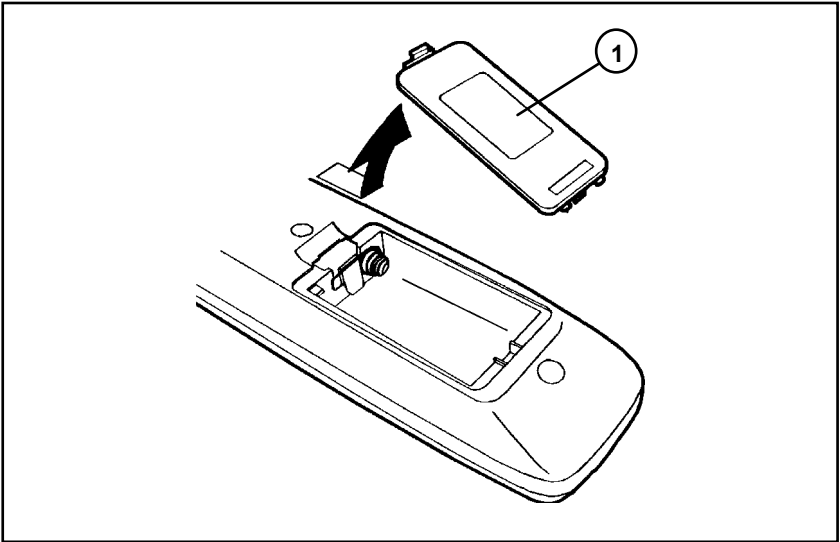
 Ref.No.	Part No.	Part Name.	Description
1	25-1168F	BATTERY COVER	

[AV-21FR3] (RM-C90-1H)

 Ref.No.	Part No.	Part Name.	Description
1	25-1168F	BATTERY COVER	

[AV-21FMG3B] (RM-C364-1H)

 Ref.No.	Part No.	Part Name.	Description
1	25-1168F	BATTERY COVER	



AV-21F3
AV-21FR3
AV-21FMG3B

EXPLODED VIEW PARTS LIST

△ Ref.No.	Part No.	Part Name	Description
AV-21F3			
△ V01	A51KQK99X	PICTURE TUBE	
△ L01	QQW0077-001	DEG COIL	or QQW0076-001
△ DY01	QQD0061-001	DEF YOKE	
△ T1522	QQH0134-001	F B T	
△ 1	LC10394-038A-H	FRONT CABINET	
△ 2	CM48006-007-C	JVC MARK	
△ 3	LC30617-001C-H	E.E.WINDOW	
△ 4	LC30616-004A-H	POWER KNOB	
△ 5	CM35235-006-H	SPRING	
△ 6	LC20292-004A-H	CONTROL KNOB	
△ 7	LC30618-001B-H	LED LENS	
△ 8	A48457-3-H	SPRING	
△ 9	CHGB0016-0B-FH	BRAIDED WIRE	
△ 10	A75034-B	P C MAGNET	or CE42378-00B
△ 11	CE42764-00A	WEDGE ASSY	(X3)
△ 12	CM36623-B01-H	CHASSIS RAIL	(X2)
△ 13	QAS0036-001	SPEAKER	(X2)SP01
△ 14	QMPR340-165-K2	POWER CORD	
△ 15	CM47005-A01-H	CORD CLAMP	
△ 16	LC10448-002B-H	REAR COVER	
△ 17	LC20377-010B-H	RATING LABEL	
△ 18	QYSBSF3010Z	TAP SCREW	(X1)For REAR COVER
△ 19	QYSBSFG4016Z	TAP SCREW	(X6)For REAR COVER

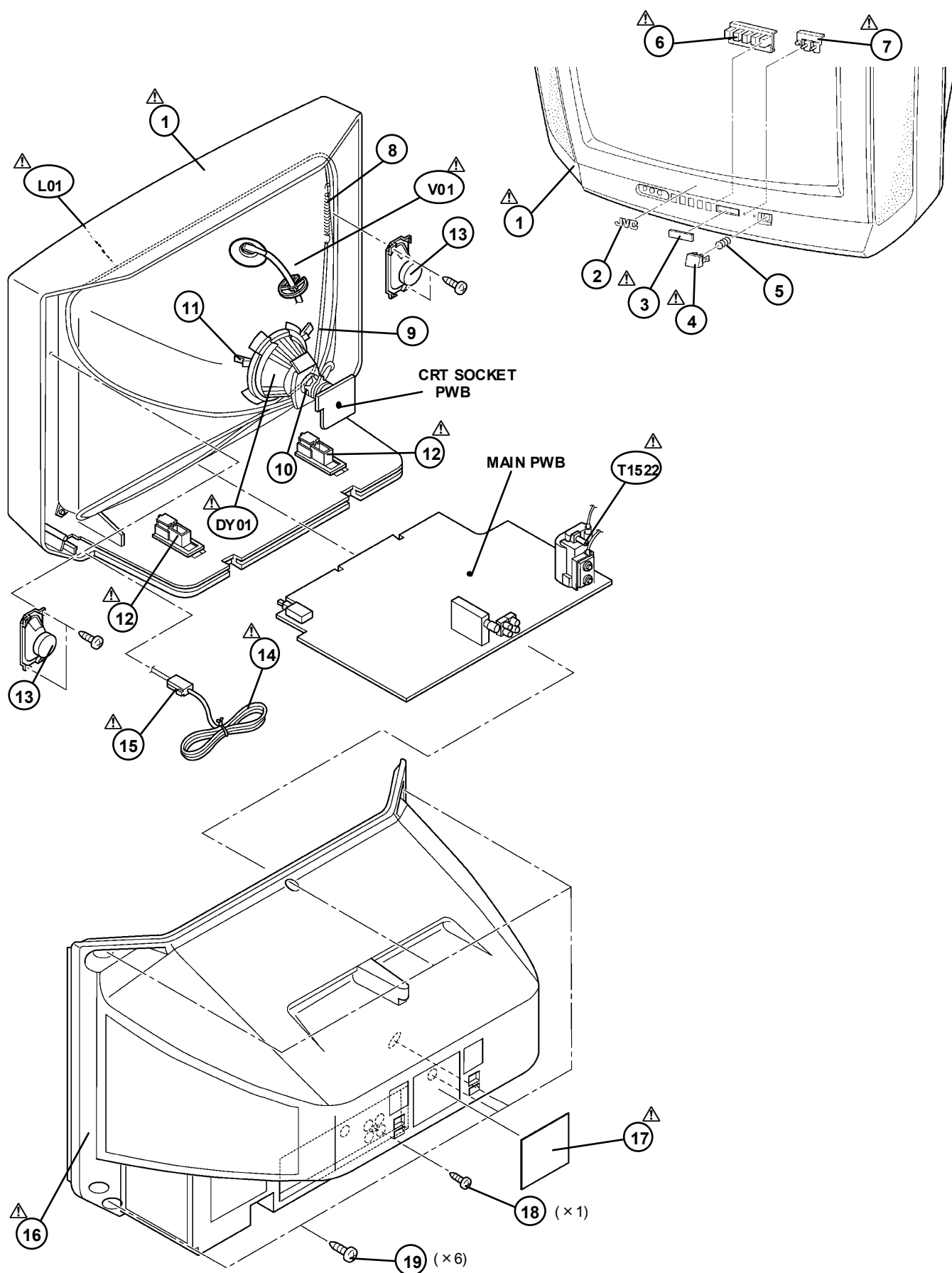
AV-21FR3

△ V01	A51KQK99X	PICTURE TUBE	
△ L01	QQW0077-001	DEG COIL	or QQW0076-001
△ DY01	QQD0061-001	DEF YOKE	
△ T1522	QQH0134-001	F B T	
△ 1	LC10394-037A-H	FRONT CABINET	
△ 2	CM48006-007-C	JVC MARK	
△ 3	LC30617-001C-H	E.E.WINDOW	
△ 4	LC30616-004A-H	POWER KNOB	
△ 5	CM35235-006-H	SPRING	
△ 6	LC20292-004A-H	CONTROL KNOB	
△ 7	LC30618-001B-H	LED LENS	
△ 8	A48457-3-H	SPRING	
△ 9	CHGB0016-0B-FH	BRAIDED WIRE	
△ 10	A75034-B	P C MAGNET	or CE42378-00B
△ 11	CE42764-00A	WEDGE ASSY	(X3)
△ 12	CM36623-B01-H	CHASSIS RAIL	(X2)
△ 13	QAS0036-001	SPEAKER	(X2)SP01
△ 14	QMPR340-165-K2	POWER CORD	
△ 15	CM47005-A01-H	CORD CLAMP	
△ 16	LC10448-002B-H	REAR COVER	
△ 17	LC20377-001B-H	RATING LABEL	
△ 18	QYSBSF3010Z	TAP SCREW	(X1)For REAR COVER
△ 19	QYSBSFG4016Z	TAP SCREW	(X6)For REAR COVER

AV-21FMG3B

△ V01	A51KQK99X	PICTURE TUBE	
△ L01	QQW0077-001	DEG COIL	or QQW0076-001
△ DY01	QQD0061-001	DEF YOKE	
△ T1522	QQH0131-001	F B T	
△ 1	LC10394-039A-H	FRONT CABINET	
△ 2	CM48006-007-C	JVC MARK	
△ 3	LC30617-001C-H	E.E.WINDOW	
△ 4	LC30616-004A-H	POWER KNOB	
△ 5	CM35235-006-H	SPRING	
△ 6	LC20292-004A-H	CONTROL KNOB	
△ 7	LC30618-001B-H	LED LENS	
△ 8	A48457-3-H	SPRING	
△ 9	CHGB0016-0B-FH	BRAIDED WIRE	
△ 10	A75034-B	P C MAGNET	or CE42378-00B
△ 11	CE42764-00A	WEDGE ASSY	(X3)
△ 12	CM36623-B01-H	CHASSIS RAIL	(X2)
△ 13	QAS0036-001	SPEAKER	(X2)SP01
△ 14	QMPR340-165-K2	POWER CORD	
△ 15	CM47005-A01-H	CORD CLAMP	
△ 16	LC10448-002B-H	REAR COVER	
△ 17	LC20377-010B-H	RATING LABEL	
△ 18	QYSBSF3010Z	TAP SCREW	(X1)For REAR COVER
△ 19	QYSBSFG4016Z	TAP SCREW	(X6)For REAR COVER

EXPLODED VIEW



PRINTED WIRING BOARD PARTS LIST

[AV-21F3]

MAIN P.W. BOARD ASS'Y (SCG-1411A-H2)

△ Symbol No.	Part No.	Part Name	Description
RESISTOR			
R1002	NRSA63J-221X	MG R	220Ω 1/16W J
R1008	NRSA63J-221X	MG R	220Ω 1/16W J
R1004	NRSA63J-563X	MG R	56kΩ 1/16W J
R1102	NRSA63J-750X	MG R	75Ω 1/16W J
R1108	NRSA63J-100X	MG R	10Ω 1/16W J
R1109	NRSA63J-682X	MG R	6.8kΩ 1/16W J
R1110	NRSA63J-272X	MG R	2.7kΩ 1/16W J
R1111	NRSA63J-181X	MG R	180Ω 1/16W J
R1112	NRSA63J-100X	MG R	10Ω 1/16W J
R1113	NRSA63J-101X	MG R	100Ω 1/16W J
R1120	NRSA63J-391X	MG R	390Ω 1/16W J
R1121	NRSA63J-221X	MG R	220Ω 1/16W J
R1139	NRSA02J-184X	MG R	180kΩ 1/10W J
R1301	NRSA63J-221X	MG R	220Ω 1/16W J
R1302	NRSA63J-472X	MG R	4.7kΩ 1/16W J
R1308	NRSA63J-101X	MG R	100Ω 1/16W J
R1304	NRSA63J-101X	MG R	100Ω 1/16W J
R1305	NRSA63J-101X	MG R	100Ω 1/16W J
R1306	NRSA63J-221X	MG R	220Ω 1/16W J
R1307	NRSA63J-122X	MG R	1.2kΩ 1/16W J
R1308	NRSA63J-182X	MG R	1.8kΩ 1/16W J
R1312	NRSA63J-0R0X	MG R	0.0Ω 1/16W J
R1313	NRSA63J-102X	MG R	1kΩ 1/16W J
R1314	NRSA63J-102X	MG R	1kΩ 1/16W J
R1321	NRSA63J-152X	MG R	1.5kΩ 1/16W J
R1322	NRSA63J-272X	MG R	2.7kΩ 1/16W J
R1323	NRSA63J-103X	MG R	10kΩ 1/16W J
R1324	NRSA63J-102X	MG R	1kΩ 1/16W J
R1326	NRSA63J-101X	MG R	100Ω 1/16W J
R1327	NRSA02J-475X	MG R	4.7kΩ 1/10W J
R1341	NRSA63J-332X	MG R	3.3kΩ 1/16W J
R1347	NRSA63J-392X	MG R	3.9kΩ 1/16W J
R1349	NRSA63J-472X	MG R	4.7kΩ 1/16W J
R1351	NRSA63J-151X	MG R	150Ω 1/16W J
R1352	NRSA63J-151X	MG R	150Ω 1/16W J
R1353	NRSA63J-151X	MG R	150Ω 1/16W J
R1354	NRSA63J-331X	MG R	330Ω 1/16W J
R1355	NRSA63J-331X	MG R	330Ω 1/16W J
R1356	NRSA63J-331X	MG R	330Ω 1/16W J
R1357	NRSA63J-101X	MG R	100Ω 1/16W J
R1358	NRSA63J-101X	MG R	100Ω 1/16W J
R1359	NRSA63J-101X	MG R	100Ω 1/16W J
R1360	QRZ0107-152Z	C R	1.5kΩ 1/2W K
R1361	QRZ0107-152Z	C R	1.5kΩ 1/2W K
R1362	QRZ0107-152Z	C R	1.5kΩ 1/2W K
R1363	QRL029J-123	OM R	12kΩ 2W J
R1364	QRL029J-123	OM R	12kΩ 2W J
R1365	QRL029J-123	OM R	12kΩ 2W J
R1366	NRSA63J-182X	MG R	1.8kΩ 1/16W J
R1367	NRSA63J-182X	MG R	1.8kΩ 1/16W J
R1368	NRSA63J-182X	MG R	1.8kΩ 1/16W J
R1372	NRSA63J-0R0X	MG R	0.0Ω 1/16W J
R1374	NRSA63J-392X	MG R	3.9kΩ 1/16W J
R1401	NRSA63J-103X	MG R	10kΩ 1/16W J
R1421	NRSA63J-472X	MG R	4.7kΩ 1/16W J
R1423	NRSA63J-0R0X	MG R	0.0Ω 1/16W J
R1424	NRSA63J-0R0X	MG R	0.0Ω 1/16W J
R1425	NRSA63J-332X	MG R	3.3kΩ 1/16W J
R1426	NRSA63J-0R0X	MG R	0.0Ω 1/16W J
R1429	NRSA63J-103X	MG R	10kΩ 1/16W J
R1430	NRSA63J-823X	MG R	82kΩ 1/16W J
R1431	NRSA63J-103X	MG R	10kΩ 1/16W J
R1432	QRE121J-3R9Y	C R	3.9Ω 1/2W J
R1433	QRE121J-2R7Y	C R	2.7Ω 1/2W J
R1436	NRSA63J-823X	MG R	82kΩ 1/16W J
R1437	NRSA63J-822X	MG R	8.2kΩ 1/16W J
R1438	NRSA63J-223X	MG R	22kΩ 1/16W J
R1439	NRSA63J-104X	MG R	100kΩ 1/16W J
R1440	QRE121J-471Y	C R	470Ω 1/2W J
R1441	NRSA63J-822X	MG R	8.2kΩ 1/16W J
R1442	NRSA63J-103X	MG R	10kΩ 1/16W J
R1443	QRE121J-1R0Y	C R	1.0Ω 1/2W J

△ Symbol No.	Part No.	Part Name	Description
RESISTOR			
R1453	NRSA63J-272X	MG R	2.7kΩ 1/16W J
R1502	NRSA63J-0R0X	MG R	0.0Ω 1/16W J
R1503	NRSA63J-682X	MG R	6.8kΩ 1/16W J
R1525	QRL029J-180	OM R	18Ω 2W J
R1526	QRE121J-271Y	C R	27Ω 1/2W J
R1529	QRL089J-681	OM R	680Ω 3W J
R1531	NRSA63J-331X	MG R	330Ω 1/16W J
R1532	NRSA63J-102X	MG R	1kΩ 1/16W J
△ R1551	QRZ9011-1R0	F R	1.0Ω 1/2W J
R1552	QRJ146J-2R2X	C R	2.2Ω 1/4W J
R1554	QRE121J-681Y	C R	68Ω 1/2W J
R1571	QRE121J-222Y	C R	2.2kΩ 1/2W J
R1573	QRT029J-1R5	MF R	1.5Ω 2W J
R1574	QRT029J-1R5	MF R	1.5Ω 2W J
R1576	QRE121J-223Y	C R	22kΩ 1/2W J
R1577	NRSA63J-392X	MG R	3.9kΩ 1/16W J
R1578	NRSA63J-103X	MG R	10kΩ 1/16W J
R1581	QRE121J-182Y	C R	1.8kΩ 1/2W J
R1582	NRSA63J-223X	MG R	22kΩ 1/16W J
R1583	NRSA63J-393X	MG R	39kΩ 1/16W J
R1651	NRSA63J-472X	MG R	4.7kΩ 1/16W J
R1652	NRSA63J-102X	MG R	1kΩ 1/16W J
R1653	NRSA63J-331X	MG R	330Ω 1/16W J
R1654	NRSA63J-223X	MG R	22kΩ 1/16W J
R1655	NRSA63J-473X	MG R	47kΩ 1/16W J
R1656	NRSA63J-822X	MG R	8.2kΩ 1/16W J
R1657	NRSA63J-222X	MG R	2.2kΩ 1/16W J
R1658	NRSA63J-222X	MG R	2.2kΩ 1/16W J
R1659	QRE121J-4R7Y	C R	4.7Ω 1/2W J
R1660	NRSA63J-153X	MG R	15kΩ 1/16W J
R1661	QRE121J-271Y	C R	27Ω 1/2W J
R1662	QRE121J-271Y	C R	27Ω 1/2W J
R1664	NRSA63J-682X	MG R	6.8kΩ 1/16W J
R1665	NRSA63J-103X	MG R	10kΩ 1/16W J
R1666	NRSA63J-101X	MG R	100Ω 1/16W J
R1667	QRE121J-101Y	C R	100Ω 1/2W J
△ R1668	QRT029J-5R6	MF R	5.6Ω 2W J
R1701	NRSA63J-562X	MG R	5.6kΩ 1/16W J
R1702	NRSA63J-682X	MG R	6.8kΩ 1/16W J
R1703	NRSA63J-392X	MG R	3.9kΩ 1/16W J
R1704	NRSA63J-221X	MG R	22Ω 1/16W J
R1705	NRSA63J-221X	MG R	22Ω 1/16W J
R1706	NRSA63J-561X	MG R	56Ω 1/16W J
R1707	NRSA63J-561X	MG R	56Ω 1/16W J
R1708	NRSA63J-102X	MG R	1kΩ 1/16W J
R1709	NRSA63J-472X	MG R	4.7kΩ 1/16W J
R1710	NRSA63J-472X	MG R	4.7kΩ 1/16W J
R1711	NRSA63J-472X	MG R	4.7kΩ 1/16W J
R1712	NRSA63J-472X	MG R	4.7kΩ 1/16W J
R1713	NRSA63J-472X	MG R	4.7kΩ 1/16W J
R1714	NRSA63J-472X	MG R	4.7kΩ 1/16W J
R1715	NRSA63J-221X	MG R	22Ω 1/16W J
R1716	NRSA63J-221X	MG R	22Ω 1/16W J
R1718	NRSA63J-561X	MG R	56Ω 1/16W J
R1719	NRSA63J-102X	MG R	1kΩ 1/16W J
R1720	NRSA63J-472X	MG R	4.7kΩ 1/16W J
R1721	NRSA63J-103X	MG R	10kΩ 1/16W J
△ R1723	QRL089J-270	OM R	27Ω 3W J
R1725	NRSA63J-102X	MG R	1kΩ 1/16W J
R1726	NRSA63J-472X	MG R	4.7kΩ 1/16W J
R1727	NRSA63J-153X	MG R	15kΩ 1/16W J
R1728	NRSA63J-102X	MG R	1kΩ 1/16W J
R1729	NRSA63J-102X	MG R	1kΩ 1/16W J
R1730	NRSA63J-103X	MG R	10kΩ 1/16W J
R1731	NRSA63J-472X	MG R	4.7kΩ 1/16W J
R1736	NRSA63J-823X	MG R	82kΩ 1/16W J
R1737	NRSA63J-104X	MG R	100kΩ 1/16W J
R1738	NRSA63J-103X	MG R	10kΩ 1/16W J
R1739	NRSA63J-103X	MG R	10kΩ 1/16W J
R1740	NRSA63J-392X	MG R	3.9kΩ 1/16W J
R1741	NRSA63J-561X	MG R	56Ω 1/16W J
R1742	NRSA63J-563X	MG R	56kΩ 1/16W J

[AV-21F3]

△ Symbol No.	Part No.	Part Name	Description
RESISTOR			
R1746	NRS463J-103X	MG R	10kΩ 1/16W J
R1747	NRS463J-0R0X	MG R	0.0Ω 1/16W J
R1748	NRS463J-101X	MG R	100Ω 1/16W J
R1749	NRS463J-472X	MG R	4.7kΩ 1/16W J
R1771	NRS463J-821X	MG R	820Ω 1/16W J
R1772	NRS463J-821X	MG R	820Ω 1/16W J
R1791	NRS463J-221X	MG R	220Ω 1/16W J
R1792	NRS463J-221X	MG R	220Ω 1/16W J
R1793	NRS463J-221X	MG R	220Ω 1/16W J
R1794	NRS463J-221X	MG R	220Ω 1/16W J
R1795	NRS463J-221X	MG R	220Ω 1/16W J
R1796	NRS463J-103X	MG R	10kΩ 1/16W J
R1797	NRS463J-153X	MG R	15kΩ 1/16W J
R1802	NRS463J-750X	MG R	75Ω 1/16W J
R1806	QRE121J-271Y	C R	270Ω 1/2W J
R1807	NRS463J-680X	MG R	68Ω 1/16W J
R1810	QRG016J-560	OM R	56Ω 1W J
R1811	NRS463J-221X	MG R	220Ω 1/16W J
R1815	QRE121J-181Y	C R	180Ω 1/2W J
R1816	NRS463J-681X	MG R	680Ω 1/16W J
R1817	NRS463J-472X	MG R	4.7kΩ 1/16W J
R1901	QRF104K-3R9	UNF R	3.9Ω 10W K
R1903	QRL029J-104	OM R	100kΩ 2W J
R1904	QRL039J-151	OM R	150Ω 3W J
R1906	QRL029J-104	OM R	100kΩ 2W J
R1921	QRE121J-2R2Y	C R	2.2Ω 1/2W J
R1922	QRE121J-221Y	C R	220Ω 1/2W J
R1923	QRM034J-R22	M P R	0.22kΩ 3W J
R1928	QRL039J-683	OM R	68kΩ 3W J
R1933	QRE121J-4R7Y	C R	4.7Ω 1/2W J
R1934	NRS463J-683X	MG R	68kΩ 1/16W J
R1935	QRE121J-562Y	C R	5.6kΩ 1/2W J
R1974	NRS463J-222X	MG R	2.2kΩ 1/16W J
R1976	QRT029J-8R2	MF R	8.2Ω 2W J
R1977	QRE121J-122Y	C R	1.2kΩ 1/2W J
R1978	NRS463J-473X	MG R	47kΩ 1/16W J
R1979	QRL039J-220	OM R	22Ω 3W J
R1980	QRL029J-152	OM R	1.5kΩ 2W J
△ R1991	QRZ9046-825Z	C R	8.2MΩ 1/2W K

CAPACITOR

C1001	QETNLHM-106Z	E CAP.	10μF 50V M
C1002	NCB31HK-103X	C CAP.	0.01μF 50V K
C1004	QETNLHM-477Z	E CAP.	470μF 16V M
C1005	QFV71HJ-104Z	MF CAP.	0.1μF 50V J
C1008	QETNLHM-475Z	E CAP.	4.7μF 50V M
C1103	QETNLEM-476Z	E CAP.	47μF 25V M
C1104	NCB31HK-472X	C CAP.	4700pF 50V K
C1105	NCB31HK-472X	C CAP.	4700pF 50V K
C1106	NCB31HK-472X	C CAP.	4700pF 50V K
C1107	NCB31HK-472X	C CAP.	4700pF 50V K
C1110	NRS463J-0R0X	MG R	0.0Ω 1/16W J
C1112	QETNLEM-476Z	E CAP.	47μF 25V M
C1113	NCB31HK-472X	C CAP.	4700pF 50V K
C1114	NCB31HK-103X	C CAP.	0.01μF 50V K
C1115	NCB31HK-103X	C CAP.	0.01μF 50V K
C1116	NCB31HK-103X	C CAP.	0.01μF 50V K
C1117	QFV71HJ-224Z	MF CAP.	0.22μF 50V J
C1119	QETNLHM-474Z	E CAP.	0.47μF 50V M
C1120	NDC31HJ-121X	C CAP.	120pF 50V J
C1121	NCB31HK-103X	C CAP.	0.01μF 50V K
C1122	NCB31HK-103X	C CAP.	0.01μF 50V K
C1162	NCB31HK-152X	C CAP.	1500pF 50V K
C1301	NCB31HK-123X	C CAP.	0.012μF 50V K
C1302	QETNLHM-475Z	E CAP.	4.7μF 50V M
C1303	NDC31HJ-100X	C CAP.	10pF 50V J
C1304	QFV71HJ-474Z	MF CAP.	0.47μF 50V J
C1305	QETNLHM-474Z	E CAP.	0.47μF 50V M
C1306	NCB31HK-103X	C CAP.	0.01μF 50V K
C1307	QETNLHM-477Z	E CAP.	470μF 16V M
C1308	QETNLHM-107Z	E CAP.	100μF 16V M
C1309	NCB31HK-103X	C CAP.	0.01μF 50V K
C1310	NDC31HJ-221X	C CAP.	220pF 50V J
C1311	NCB31HK-103X	C CAP.	0.01μF 50V K

△ Symbol No.	Part No.	Part Name	Description
CAPACITOR			
C1312	QENCLHM-474Z	BP E CAP.	0.47μF 50V M
C1313	QETNLHM-335Z	E CAP.	3.3μF 50V M
C1314	NCB31HK-103X	C CAP.	0.01μF 50V K
C1315	QETNLHM-107Z	E CAP.	100μF 16V M
C1316	QETNLHM-106Z	E CAP.	10μF 50V M
C1317	NCB31EK-473X	C CAP.	0.047μF 25V K
C1321	NDC31HJ-120X	C CAP.	12pF 50V J
C1322	NCB31EK-273X	C CAP.	0.027μF 25V K
C1323	QETNLHM-474Z	E CAP.	0.47μF 50V M
C1324	QETNLHM-106Z	E CAP.	10μF 50V M
C1325	QENCLHM-106Z	BP E CAP.	10μF 50V M
C1326	NCS21HJ-221X	C CAP.	220pF 50V J
C1341	QETNLHM-106Z	E CAP.	10μF 50V M
C1352	QFZ0097-103	MM CAP.	0.01μF 1250V K
C1354	NDC31HJ-271X	C CAP.	270pF 50V J
C1355	NDC31HJ-221X	C CAP.	220pF 50V J
C1356	NDC31HJ-331X	C CAP.	330pF 50V J
C1357	QETNLHM-477Z	E CAP.	470μF 10V M
C1365	QENCLHM-105Z	E CAP.	1μF 50V M
C1366	QENCLHM-105Z	E CAP.	1μF 50V M
C1367	QENCLHM-105Z	E CAP.	1μF 50V M
C1401	QFV71HJ-474Z	MF CAP.	0.47μF 50V J
C1423	QCS32HJ-180Z	C CAP.	18pF 500V J
C1424	QFLC2AJ-103Z	M CAP.	0.01μF 100V J
C1426	QFLC1HJ-102Z	M CAP.	1000pF 50V J
C1427	QETNLHM-107Z	E CAP.	100μF 35V M
C1428	QETNLHM-107Z	E CAP.	100μF 35V M
C1429	QETNLHM-106Z	E CAP.	10μF 50V M
C1430	QFN32AJ-472Z	M CAP.	4700pF 100V J
C1433	QETNLHM-475Z	E CAP.	4.7μF 50V M
C1435	QETNLEM-228	E CAP.	2200μF 25V M
C1436	QFV71HJ-334Z	MF CAP.	0.33μF 50V J
C1437	NCB31HK-104X	C CAP.	0.1μF 50V K
C1501	QETNLHM-477Z	E CAP.	470μF 10V M
C1502	NCB31HK-103X	C CAP.	0.01μF 50V K
C1503	QETNLHM-106Z	E CAP.	10μF 50V M
C1523	QETNLEM-476Z	E CAP.	47μF 25V M
△ C1525	QFZ000-972	MPP CAP.	9700pF 5KVH±3%
C1526	QFLC1HJ-103Z	M CAP.	0.01μF 50V J
△ C1527	QFZ0199-334	M P P CAP.	0.33μF 250V J
C1529	QFN32AJ-102Z	M CAP.	1000pF 100V J
C1531	QEZ003-107	E CAP.	100μF 160V M
C1552	QETNLHM-108	E CAP.	1000μF 35V M
C1554	QETNLEM-475Z	E CAP.	4.7μF 250V M
C1555	QFLC2AJ-104Z	M CAP.	0.1μF 100V J
C1557	QETNLHM-107Z	E CAP.	100μF 50V M
C1571	QETNLHM-107Z	E CAP.	100μF 10V M
C1572	QETNLEM-476Z	E CAP.	47μF 25V M
C1581	QFV71HJ-104Z	MF CAP.	0.1μF 50V J
C1652	NCB31HK-473X	C CAP.	0.047μF 50V K
C1653	QETNLHM-106Z	E CAP.	10μF 50V M
C1654	QETNLHM-477Z	E CAP.	470μF 16V M
C1655	QETNLHM-106Z	E CAP.	10μF 50V M
C1656	QENCLHM-105Z	E CAP.	1μF 50V M
C1657	QETNLEM-107Z	E CAP.	100μF 25V M
C1658	QETNLEM-227Z	E CAP.	220μF 25V M
C1659	QETNLHM-475Z	E CAP.	4.7μF 50V M
C1663	NCB31HK-102X	C CAP.	1000pF 50V K
C1664	QETNLHM-107Z	E CAP.	100μF 16V M
C1665	NCB31HK-103X	C CAP.	0.01μF 50V K
C1701	QETNLHM-106Z	E CAP.	10μF 50V M
C1705	QETNLHM-477Z	E CAP.	470μF 16V M
C1706	NCB31HK-104X	C CAP.	0.1μF 50V K
C1707	NCB31HK-103X	C CAP.	0.01μF 50V K
C1708	QETNLHM-108Z	E CAP.	1000μF 10V M
C1709	NCB31HK-103X	C CAP.	0.01μF 50V K
C1710	QETNLHM-107Z	E CAP.	100μF 16V M
C1711	NCB31HK-103X	C CAP.	0.01μF 50V K
C1712	NCB31HK-103X	C CAP.	0.01μF 50V K
C1713	NCB31HK-103X	C CAP.	0.01μF 50V K
C1716	NDC31HJ-181X	C CAP.	180pF 50V J
C1717	NDC31HJ-181X	C CAP.	180pF 50V J
C1718	NCB31HK-103X	C CAP.	0.01μF 50V K
C1719	QETNLHM-105Z	E CAP.	1μF 50V M
C1720	NCB31HK-103X	C CAP.	0.01μF 50V K
C1721	NCB31EK-333X	C CAP.	0.033μF 25V K

[AV-21F3]

△ Symbol No. Part No. Part Name Description

CAPACITOR

C1722	NDC31HJ-101X	C CAP.	100pF 50V J
C1724	NDC31HJ-560X	C CAP.	56pF 50V J
C1728	NDC31HJ-181X	C CAP.	180pF 50V J
C1729	NDC31HJ-181X	C CAP.	180pF 50V J
C1730	NCB31HK-103X	C CAP.	0.01μF 50V K
C1741	QETN1HM-106Z	E CAP.	10μF 50V M
C1742	QETN1HM-106Z	E CAP.	10μF 50V M
C1743	QETN1HM-106Z	E CAP.	10μF 50V M
C1744	NCB31HK-103X	C CAP.	0.01μF 50V K
C1805	QETN1CM-227Z	E CAP.	220μF 16V M
C1806	QETN1CM-477Z	E CAP.	470μF 16V M
C1811	QETN1HM-106Z	E CAP.	10μF 50V M
C1841	NCB31HK-152X	C CAP.	1500pF 50V K
△ C1901	QFZ9078-224	M P F CAP	0.22μF AC275V M
△ C1904	QCZ9015-102	C CAP.	1000pFAC250V Z
△ C1905	QCZ9015-102	C CAP.	1000pFAC250V Z
△ C1907	QCZ9015-102	C CAP.	1000pFAC250V Z
△ C1909	QEZO52-127	E CAP. or QEZO199-127	120μF 400V M
△ C1910	QFZ9078-473	M P F CAP	0.047μF AC275V M
C1922	QFLC1HJ-104Z	M CAP.	0.1μF 50V J
C1924	QETN1HM-475Z	E CAP.	4.7μF 50V M
C1925	QETN1VM-476Z	E CAP.	47μF 35V M
C1926	QFLC1HJ-332Z	M CAP.	3300pF 50V J
△ C1929	QFK42JK-103	M M CAP	0.01μF 630V K
△ C1931	QCZ0364-681	C CAP.	680pF 2KV K
C1932	NDC31HJ-681X	C CAP.	680pF 50V J
C1941	QCZ0364-561	C CAP.	560pF 2KV K
C1942	QEZO03-107	E CAP.	100μF 160V M
C1944	QCB32HK-222Z	C CAP.	2200pF 500V K
C1945	QEHRLM-108Z	E CAP.	1000μF 25V M
C1946	QETN1EM-108Z	E CAP.	1000μF 25V M
C1947	QCB32HK-222Z	C CAP.	2200pF 500V K
C1948	QETN1EM-108Z	E CAP.	1000μF 25V M
C1949	NDC31HJ-471X	C CAP.	470pF 50V J
C1961	QETN1HM-475Z	E CAP.	4.7μF 50V M
C1976	QETN1EM-227Z	E CAP.	220μF 25V M
C1977	QETN1CM-227Z	E CAP.	220μF 16V M
C1978	QETN1EM-227Z	E CAP.	220μF 25V M
C1979	QETN1AM-227Z	E CAP.	220μF 10V M
△ C1991	QCZ9079-102	C CAP.	1000pFAC250V M
△ C1992	QCZ9079-102	C CAP.	1000pFAC250V M
△ C1993	QCZ9079-222	C CAP.	2200pFAC250V M

TRANSFORMER

△ T1501	QQR1244-001	DRIVE TRANSF.
△ T1522	QQH0134-001	F B T
△ T1921	QQS0161-001	SW TRANSF.

COIL

L1001	QQL244K-8R2Z	COIL	8.2μH K
L1101	QQL244J-2R2Z	COIL	2.2μH J
L1108	QQL244K-8R2Z	COIL	8.2μH K
L1551	QQL2034-240	HEATER CHOKE	
L1701	QQL244J-5R6Z	COIL	5.6μH J
L1941	QQL26AK-820Z	COIL	82μH K
L1942	QQL244J-4R7Z	PEAKING COIL	
L1943	QQL244J-4R7Z	PEAKING COIL	

DIODE

D1001	MTZJ3A-T2	ZENER DIODE	
D1301	MTZJ9.1B-T2	ZENER DIODE	
D1302	MTZJ9.1B-T2	ZENER DIODE	
D1305	AK04-T2	DIODE	
D1306	QRE121J-121Y	C R	120Ω 1/2W J
D1341	MA111-X	CHIP DIODE	
D1421	MTZJ75-T2	ZENER DIODE	
D1423	1SR124-400A-T2	SI DIODE	
D1425	MA111-X	CHIP DIODE	
D1427	MTZJ27B-T2	ZENER DIODE	

△ Symbol No. Part No. Part Name Description

DIODE

D1501	MTZJ6.8C-T2	ZENER DIODE
D1551	RGP10J-5025-T3	SI DIODE
D1552	RGP10J-5025-T3	SI DIODE
D1553	MTZJ9.1B-T2	ZENER DIODE
D1554	MA111-X	CHIP DIODE
D1557	1SR124-400A-T2	SI DIODE
D1571	MTZJ7.5S-T2	ZENER DIODE
D1581	MTZJ20B-T2	ZENER DIODE
D1582	RGP10J-5025-T3	SI DIODE
D1651	MA111-X	CHIP DIODE
D1652	MTZJ12C-T2	ZENER DIODE
D1653	MA111-X	CHIP DIODE
D1654	MTZJ12C-T2	ZENER DIODE
D1655	MA111-X	CHIP DIODE
D1656	MA111-X	CHIP DIODE
D1657	MA111-X	CHIP DIODE
D1701	MA111-X	CHIP DIODE
D1704	SLR-342VR-T16	L E D (RED)
D1705	SLR-342DU-T16	L E D (OR)
D1707	MA111-X	CHIP DIODE
△ D1731	MA111-X	CHIP DIODE
△ D1901	G25BA60	BRIDGE DIODE
D1921	RGP10J-5025-T3	SI DIODE
D1925	RGP10J-5025-T3	SI DIODE
D1927	MTZJ36A-T2	ZENER DIODE
D1928	MTZJ3.3A-T2	ZENER DIODE
D1929	MTZJ3.3A-T2	ZENER DIODE
D1930	RGP10M-5010-T3	SI DIODE
D1931	MA111-X	CHIP DIODE
D1933	MTZJ16C-T2	ZENER DIODE
D1941	RU3AM-LFC4	SI DIODE
D1942	RU3Y-LFC4	SI DIODE
D1943	RGP10J-5025-T3	SI DIODE
D1982	MA111-X	CHIP DIODE
D1983	MA111-X	CHIP DIODE

TRANSISTOR

Q1102	2SC5083/L-P/-T	SI TRANSISTOR	
Q1301	2SB709A/QR/-X	CHIP TRANSISTOR	
Q1302	2SD601A/QR/-X	CHIP TRANSISTOR	
Q1351	STC344-T	SI TRANSISTOR	
Q1352	STC344-T	SI TRANSISTOR	
Q1353	STC344-T	SI TRANSISTOR	
Q1401	DTC124ESA-T	DIGI. TRANSISTOR	
Q1402	2SD601A/QR/-X	CHIP TRANSISTOR	
Q1403	2SD601A/QR/-X	CHIP TRANSISTOR	
Q1404	2SD601A/QR/-X	CHIP TRANSISTOR	
△ Q1521	2SC2655/Y/-T	SI TRANSISTOR	
△ Q1522	2SD2627-YB11	POWER TRANSISTOR	H. OUT
Q1571	2SA1208/ST/Z1-T	SI TRANSISTOR	
Q1572	2SD601A/QR/-X	CHIP TRANSISTOR	
Q1651	2SD601A/QR/-X	CHIP TRANSISTOR	
Q1652	2SD601A/QR/-X	CHIP TRANSISTOR	
Q1653	2SB709A/QR/-X	CHIP TRANSISTOR	
Q1702	2SD601A/QR/-X	CHIP TRANSISTOR	
Q1703	2SD601A/QR/-X	CHIP TRANSISTOR	
Q1708	UN2212-X	DIGI. TRANSISTOR	
Q1709	2SB709A/QR/-X	CHIP TRANSISTOR	
Q1803	2SC1815/YG/-T	SI TRANSISTOR	
Q1804	2SD601A/QR/-X	CHIP TRANSISTOR	
Q1974	2SA966/OY/-T	SI TRANSISTOR	
Q1975	UN2212-X	DIGI. TRANSISTOR	

IC

IC1301	NN5198K	I. C.	
IC1421	AN5522	I. C.	
IC1651	AN5265	I. C.	
△ IC1701	MN1873287JJ1	I. C.	
IC1702	AT24C08-210MG3	I. C.	(SERVICE)
IC1703	L78L05E-MA	I. C.	
IC1704	PIC-471435Y	IR DETECT	
△ IC1921	STR-W5753A/F5	I. C.	
IC1971	BA17809T	I. C.	
IC1972	BA17805T	I. C.	

[AV-21F3]

△ Symbol No.	Part No.	Part Name	Description
OTHERS			
△ CP1981	LC30114-001C-H	LED LED HOLDERR	
△ CP1982	ICP-N25-Y	I.C. PROTECT	
△ CP1982	ICP-N75-Y	I.C. PROTECT	
△ F1901	QMF51E2-3R15J4	FUSE	3.15A
△ FC1901	CEM002-001Z	FUSE CLIP	(X2)
FR1557	QRJ146J-2R2X	C R	2.2Ω 1/4W J
J1002	QNN084-001	PIN JACK	
J1003	QNN081-003	PIN JACK	or CEMN065-001
J1004	QNN081-002	PIN JACK	or CEMN065-002
△ J1005	QNS0197-001	3.5 JACK	
K1351	QQR0621-002Z	BEADS CORE	
K1421	QQR1113-001Z	FERRITE BEADS	
K1941	QQR1113-001Z	FERRITE BEADS	
K1942	QQR1113-001Z	FERRITE BEADS	
K1943	QQR1113-001Z	FERRITE BEADS	
△ LF1901	QQR0527-002	LINE FILTER	
PC1701	P1241-04	C D S	
S1701	QSW0619-003Z	PUSH SWITCH	VOL+
S1702	QSW0619-003Z	PUSH SWITCH	VOL-
S1703	QSW0619-003Z	PUSH SWITCH	CH+
S1704	QSW0619-003Z	PUSH SWITCH	CH-
S1705	QSW0619-003Z	PUSH SWITCH	MENU
△ S1901	QSW0750-001	PUSH SWITCH	POWER SW
SF1102	QAX0666-002	SAW FILTER	
SF1122	QAX0825-001	SAW FILTER	
△ SK1351	QNZ0537-001	CRT SOCKE	or QNZ0536-001
△ TH1901	QAD0121-9R0	W POSISTOR	or QAD0119-9R0
△ TU1001	QAU0282-001	TUNER	
△ VA1901	ERZV10V621CS	VARISTOR	or QAF0052-621
△ X1301	QAX0705-001Z	CRYSTAL	
X1302	CE41651-001Z	X-TAL	
X1701	QAX0807-001	CERAMIC R	

PRINTED WIRING BOARD PARTS LIST

[AV-21FR3]

MAIN P.W. BOARD ASS'Y (SCG-1402A-H2)

△ Symbol No.	Part No.	Part Name	Description
RESISTOR			
R1002	NRSA63J-221X	MG R	220Ω 1/16W J
R1008	NRSA63J-221X	MG R	220Ω 1/16W J
R1004	NRSA63J-563X	MG R	56kΩ 1/16W J
R1102	NRSA63J-750X	MG R	75Ω 1/16W J
R1108	NRSA63J-100X	MG R	10Ω 1/16W J
R1109	NRSA63J-682X	MG R	6.8kΩ 1/16W J
R1110	NRSA63J-272X	MG R	2.7kΩ 1/16W J
R1111	NRSA63J-181X	MG R	180Ω 1/16W J
R1112	NRSA63J-100X	MG R	10Ω 1/16W J
R1113	NRSA63J-101X	MG R	100Ω 1/16W J
R1120	NRSA63J-391X	MG R	390Ω 1/16W J
R1121	NRSA63J-221X	MG R	220Ω 1/16W J
R1139	NRSA02J-184X	MG R	180kΩ 1/10W J
R1301	NRSA63J-221X	MG R	220Ω 1/16W J
R1302	NRSA63J-472X	MG R	4.7kΩ 1/16W J
R1308	NRSA63J-101X	MG R	100Ω 1/16W J
R1304	NRSA63J-101X	MG R	100Ω 1/16W J
R1305	NRSA63J-101X	MG R	100Ω 1/16W J
R1306	NRSA63J-221X	MG R	220Ω 1/16W J
R1307	NRSA63J-122X	MG R	1.2kΩ 1/16W J
R1308	NRSA63J-182X	MG R	1.8kΩ 1/16W J
R1312	NRSA63J-0R0X	MG R	0.0Ω 1/16W J
R1313	NRSA63J-102X	MG R	1kΩ 1/16W J
R1314	NRSA63J-102X	MG R	1kΩ 1/16W J
R1321	NRSA63J-152X	MG R	1.5kΩ 1/16W J
R1322	NRSA63J-272X	MG R	2.7kΩ 1/16W J
R1323	NRSA63J-103X	MG R	10kΩ 1/16W J
R1324	NRSA63J-102X	MG R	1kΩ 1/16W J
R1326	NRSA63J-101X	MG R	100Ω 1/16W J
R1327	NRSA02J-475X	MG R	4.7MΩ 1/10W J
R1341	NRSA63J-332X	MG R	3.3kΩ 1/16W J
R1347	NRSA63J-392X	MG R	3.9kΩ 1/16W J
R1349	NRSA63J-472X	MG R	4.7kΩ 1/16W J
R1351	NRSA63J-151X	MG R	150Ω 1/16W J
R1352	NRSA63J-151X	MG R	150Ω 1/16W J
R1353	NRSA63J-151X	MG R	150Ω 1/16W J
R1354	NRSA63J-331X	MG R	330Ω 1/16W J
R1355	NRSA63J-331X	MG R	330Ω 1/16W J
R1356	NRSA63J-331X	MG R	330Ω 1/16W J
R1357	NRSA63J-101X	MG R	100Ω 1/16W J
R1358	NRSA63J-101X	MG R	100Ω 1/16W J
R1359	NRSA63J-101X	MG R	100Ω 1/16W J
R1360	QRZ0107-152Z	C R	1.5kΩ 1/2W K
R1361	QRZ0107-152Z	C R	1.5kΩ 1/2W K
R1362	QRZ0107-152Z	C R	1.5kΩ 1/2W K
R1363	QRL029J-123	OM R	12kΩ 2W J
R1364	QRL029J-123	OM R	12kΩ 2W J
R1365	QRL029J-123	OM R	12kΩ 2W J
R1366	NRSA63J-182X	MG R	1.8kΩ 1/16W J
R1367	NRSA63J-182X	MG R	1.8kΩ 1/16W J
R1368	NRSA63J-182X	MG R	1.8kΩ 1/16W J
R1372	NRSA63J-682X	MG R	6.8kΩ 1/16W J
R1373	NRSA63J-102X	MG R	1kΩ 1/16W J
R1374	NRSA63J-472X	MG R	4.7kΩ 1/16W J
R1375	NRSA63J-153X	MG R	15kΩ 1/16W J
R1376	NRSA63J-562X	MG R	5.6kΩ 1/16W J
R1377	NRSA63J-104X	MG R	100kΩ 1/16W J
R1378	NRSA63J-104X	MG R	100kΩ 1/16W J
R1379	NRSA63J-104X	MG R	100kΩ 1/16W J
R1380	NRSA63J-154X	MG R	150kΩ 1/16W J
R1381	NRSA63J-154X	MG R	150kΩ 1/16W J
R1382	NRSA63J-154X	MG R	150kΩ 1/16W J
R1383	NRSA63J-273X	MG R	27kΩ 1/16W J
R1384	NRSA63J-472X	MG R	4.7kΩ 1/16W J
R1385	NRSA63J-123X	MG R	12kΩ 1/16W J
R1401	NRSA63J-103X	MG R	10kΩ 1/16W J
R1421	NRSA63J-472X	MG R	4.7kΩ 1/16W J
R1423	NRSA63J-0R0X	MG R	0.0Ω 1/16W J
R1424	NRSA63J-0R0X	MG R	0.0Ω 1/16W J
R1425	NRSA63J-332X	MG R	3.3kΩ 1/16W J
R1426	NRSA63J-0R0X	MG R	0.0Ω 1/16W J
R1429	NRSA63J-103X	MG R	10kΩ 1/16W J
R1430	NRSA63J-823X	MG R	82kΩ 1/16W J

△ Symbol No.	Part No.	Part Name	Description
RESISTOR			
R1431	NRSA63J-103X	MG R	10kΩ 1/16W J
R1432	QRE121J-3R9Y	C R	3.9Ω 1/2W J
R1433	QRE121J-2R7Y	C R	2.7Ω 1/2W J
R1436	NRSA63J-823X	MG R	82kΩ 1/16W J
R1437	NRSA63J-822X	MG R	8.2kΩ 1/16W J
R1438	NRSA63J-223X	MG R	22kΩ 1/16W J
R1439	NRSA63J-104X	MG R	100kΩ 1/16W J
R1440	QRE121J-471Y	C R	47Ω 1/2W J
R1441	NRSA63J-822X	MG R	8.2kΩ 1/16W J
R1442	NRSA63J-103X	MG R	10kΩ 1/16W J
R1443	QRE121J-1R0Y	C R	1.0Ω 1/2W J
R1453	NRSA63J-272X	MG R	2.7kΩ 1/16W J
R1502	NRSA63J-0R0X	MG R	0.0Ω 1/16W J
R1508	NRSA63J-682X	MG R	6.8kΩ 1/16W J
R1525	QRL029J-180	OM R	18Ω 2W J
R1526	QRE121J-271Y	C R	27Ω 1/2W J
R1529	QRL089J-681	OM R	680Ω 3W J
R1531	NRSA63J-331X	MG R	33Ω 1/16W J
R1532	NRSA63J-102X	MG R	1kΩ 1/16W J
△ R1551	QRZ011-1R0	F R	1.0Ω 1/2W J
R1552	QRJ146J-2R2X	C R	2.2Ω 1/4W J
R1554	QRE121J-681Y	C R	68Ω 1/2W J
R1571	QRE121J-222Y	C R	2.2kΩ 1/2W J
R1573	QRT029J-1R5	MF R	1.5Ω 2W J
R1574	QRT029J-1R5	MF R	1.5Ω 2W J
R1576	QRE121J-223Y	C R	22kΩ 1/2W J
R1577	NRSA63J-392X	MG R	3.9kΩ 1/16W J
R1578	NRSA63J-103X	MG R	10kΩ 1/16W J
R1581	QRE121J-182Y	C R	1.8kΩ 1/2W J
R1582	NRSA63J-223X	MG R	22kΩ 1/16W J
R1583	NRSA63J-393X	MG R	39kΩ 1/16W J
R1651	NRSA63J-472X	MG R	4.7kΩ 1/16W J
R1652	NRSA63J-102X	MG R	1kΩ 1/16W J
R1653	NRSA63J-331X	MG R	33Ω 1/16W J
R1654	NRSA63J-223X	MG R	22kΩ 1/16W J
R1655	NRSA63J-473X	MG R	47kΩ 1/16W J
R1656	NRSA63J-822X	MG R	8.2kΩ 1/16W J
R1657	NRSA63J-222X	MG R	2.2kΩ 1/16W J
R1658	NRSA63J-222X	MG R	2.2kΩ 1/16W J
R1659	QRE121J-4R7Y	C R	4.7Ω 1/2W J
R1660	NRSA63J-153X	MG R	15kΩ 1/16W J
R1661	QRE121J-271Y	C R	27Ω 1/2W J
R1662	QRE121J-271Y	C R	27Ω 1/2W J
R1664	NRSA63J-682X	MG R	6.8kΩ 1/16W J
R1665	NRSA63J-103X	MG R	10kΩ 1/16W J
R1666	NRSA63J-101X	MG R	100Ω 1/16W J
R1667	QRE121J-101Y	C R	10Ω 1/2W J
△ R1668	QRT029J-5R6	MF R	5.6Ω 2W J
R1701	NRSA63J-562X	MG R	5.6kΩ 1/16W J
R1702	NRSA63J-682X	MG R	6.8kΩ 1/16W J
R1703	NRSA63J-392X	MG R	3.9kΩ 1/16W J
R1704	NRSA63J-221X	MG R	22Ω 1/16W J
R1705	NRSA63J-221X	MG R	22Ω 1/16W J
R1706	NRSA63J-561X	MG R	56Ω 1/16W J
R1707	NRSA63J-561X	MG R	56Ω 1/16W J
R1708	NRSA63J-102X	MG R	1kΩ 1/16W J
R1709	NRSA63J-472X	MG R	4.7kΩ 1/16W J
R1710	NRSA63J-472X	MG R	4.7kΩ 1/16W J
R1711	NRSA63J-472X	MG R	4.7kΩ 1/16W J
R1712	NRSA63J-472X	MG R	4.7kΩ 1/16W J
R1713	NRSA63J-472X	MG R	4.7kΩ 1/16W J
R1714	NRSA63J-472X	MG R	4.7kΩ 1/16W J
R1715	NRSA63J-221X	MG R	22Ω 1/16W J
R1716	NRSA63J-221X	MG R	22Ω 1/16W J
R1718	NRSA63J-561X	MG R	56Ω 1/16W J
R1719	NRSA63J-102X	MG R	1kΩ 1/16W J
R1720	NRSA63J-472X	MG R	4.7kΩ 1/16W J
R1721	NRSA63J-103X	MG R	10kΩ 1/16W J
△ R1723	QRL089J-270	OM R	27Ω 3W J
R1725	NRSA63J-102X	MG R	1kΩ 1/16W J
R1726	NRSA63J-472X	MG R	4.7kΩ 1/16W J
R1727	NRSA63J-153X	MG R	15kΩ 1/16W J
R1728	NRSA63J-102X	MG R	1kΩ 1/16W J

[AV-21FR3]

△ Symbol No.	Part No.	Part Name	Description
RESISTOR			
R1729	NRS63J-102X	MG R	1kΩ 1/16W J
R1730	NRS63J-103X	MG R	10kΩ 1/16W J
R1731	NRS63J-472X	MG R	4.7kΩ 1/16W J
R1736	NRS63J-823X	MG R	82kΩ 1/16W J
R1737	NRS63J-104X	MG R	100kΩ 1/16W J
R1738	NRS63J-103X	MG R	10kΩ 1/16W J
R1739	NRS63J-103X	MG R	10kΩ 1/16W J
R1740	NRS63J-392X	MG R	3.9kΩ 1/16W J
R1741	NRS63J-561X	MG R	560Ω 1/16W J
R1742	NRS63J-563X	MG R	56kΩ 1/16W J
R1746	NRS63J-103X	MG R	10kΩ 1/16W J
R1747	NRS63J-0R0X	MG R	0.0Ω 1/16W J
R1748	NRS63J-101X	MG R	100Ω 1/16W J
R1749	NRS63J-472X	MG R	4.7kΩ 1/16W J
R1771	NRS63J-821X	MG R	820Ω 1/16W J
R1772	NRS63J-821X	MG R	820Ω 1/16W J
R1791	NRS63J-221X	MG R	220Ω 1/16W J
R1792	NRS63J-221X	MG R	220Ω 1/16W J
R1793	NRS63J-221X	MG R	220Ω 1/16W J
R1794	NRS63J-221X	MG R	220Ω 1/16W J
R1795	NRS63J-221X	MG R	220Ω 1/16W J
R1796	NRS63J-103X	MG R	10kΩ 1/16W J
R1797	NRS63J-153X	MG R	15kΩ 1/16W J
R1802	NRS63J-750X	MG R	75Ω 1/16W J
R1806	QRE121J-271Y	C R	270Ω 1/2W J
R1807	NRS63J-680X	MG R	68Ω 1/16W J
R1810	QRG01GJ-560	OM R	56Ω 1W J
R1811	NRS63J-221X	MG R	220Ω 1/16W J
R1815	QRE121J-181Y	C R	180Ω 1/2W J
R1816	NRS63J-681X	MG R	680Ω 1/16W J
R1817	NRS63J-472X	MG R	4.7kΩ 1/16W J
R1825	NRS63J-221X	MG R	220Ω 1/16W J
R1827	NRS63J-102X	MG R	1kΩ 1/16W J
R1828	NRS63J-272X	MG R	2.7kΩ 1/16W J
R1832	NRS63J-221X	MG R	220Ω 1/16W J
R1833	NRS63J-822X	MG R	8.2kΩ 1/16W J
R1834	NRS63J-393X	MG R	39kΩ 1/16W J
R1835	NRS63J-182X	MG R	1.8kΩ 1/16W J
R1836	NRS63J-473X	MG R	47kΩ 1/16W J
R1837	NRS63J-393X	MG R	39kΩ 1/16W J
R1838	NRS63J-103X	MG R	10kΩ 1/16W J
R1841	NRS63J-332X	MG R	3.3kΩ 1/16W J
R1842	NRS63J-223X	MG R	22kΩ 1/16W J
R1843	NRS63J-471X	MG R	470Ω 1/16W J
R1845	NRS63J-472X	MG R	4.7kΩ 1/16W J
R1846	NRS63J-103X	MG R	10kΩ 1/16W J
R1848	NRS63J-0R0X	MG R	0.0Ω 1/16W J
R1849	NRS63J-153X	MG R	15kΩ 1/16W J
R1850	NRS63J-332X	MG R	3.3kΩ 1/16W J
R1851	NRS63J-821X	MG R	820Ω 1/16W J
R1852	NRS63J-332X	MG R	3.3kΩ 1/16W J
R1853	NRS63J-821X	MG R	820Ω 1/16W J
R1854	NRS63J-332X	MG R	3.3kΩ 1/16W J
R1855	NRS63J-821X	MG R	820Ω 1/16W J
R1857	NRS63J-103X	MG R	10kΩ 1/16W J
R1859	NRS63J-473X	MG R	47kΩ 1/16W J
R1860	NRS63J-101X	MG R	100Ω 1/16W J
R1861	NRS63J-103X	MG R	10kΩ 1/16W J
R1862	NRS63J-391X	MG R	390Ω 1/16W J
R1901	QRF104K-3R9	UNF R	3.9Ω 10W K
R1903	QRL09J-104	OM R	100kΩ 2W J
R1904	QRL09J-151	OM R	150Ω 3W J
R1906	QRL09J-104	OM R	100kΩ 2W J
R1921	QRE121J-2R2Y	C R	2.2Ω 1/2W J
R1922	QRE121J-221Y	C R	220Ω 1/2W J
R1923	QRM084J-R22	MP R	0.22Ω 3W J
R1928	QRL09J-683	OM R	68kΩ 3W J
R1933	QRE121J-4R7Y	C R	4.7Ω 1/2W J
R1934	NRS63J-683X	MG R	68kΩ 1/16W J
R1935	QRE121J-562Y	C R	5.6kΩ 1/2W J
R1974	NRS63J-222X	MG R	2.2kΩ 1/16W J
R1976	QRT09J-8R2	MF R	8.2Ω 2W J
R1977	QRE121J-122Y	C R	1.2kΩ 1/2W J
R1978	NRS63J-473X	MG R	47kΩ 1/16W J
R1979	QRL09J-220	OM R	22Ω 3W J
R1980	QRL09J-152	OM R	1.5kΩ 2W J
△ R1991	QRZ9046-825Z	C R	8.2kΩ 1/2W K

△ Symbol No.	Part No.	Part Name	Description
CAPACITOR			
C1001	QETNLHM-106Z	E CAP.	10μF 50V M
C1002	NCB31HK-103X	C CAP.	0.01μF 50V K
C1004	QETNLHM-477Z	E CAP.	470μF 16V M
C1005	QFV71HJ-104Z	MF CAP.	0.1μF 50V J
C1008	QETNLHM-475Z	E CAP.	4.7μF 50V M
C1103	QETNLHM-476Z	E CAP.	47μF 25V M
C1104	NCB31HK-472X	C CAP.	4700pF 50V K
C1105	NCB31HK-472X	C CAP.	4700pF 50V K
C1106	NCB31HK-472X	C CAP.	4700pF 50V K
C1107	NCB31HK-472X	C CAP.	4700pF 50V K
C1110	NRS63J-0R0X	MG R	0.0Ω 1/16W J
C1112	QETNLHM-476Z	E CAP.	47μF 25V M
C1113	NCB31HK-472X	C CAP.	4700pF 50V K
C1114	NCB31HK-103X	C CAP.	0.01μF 50V K
C1115	NCB31HK-103X	C CAP.	0.01μF 50V K
C1116	NCB31HK-103X	C CAP.	0.01μF 50V K
C1117	QFV71HJ-224Z	MF CAP.	0.22μF 50V J
C1119	QETNLHM-474Z	E CAP.	0.47μF 50V M
C1120	NDC31HJ-121X	C CAP.	120pF 50V J
C1121	NCB31HK-103X	C CAP.	0.01μF 50V K
C1122	NCB31HK-103X	C CAP.	0.01μF 50V K
C1162	NCB31HK-152X	C CAP.	1500pF 50V K
C1301	NCB31HK-123X	C CAP.	0.012μF 50V K
C1302	QETNLHM-475Z	E CAP.	4.7μF 50V M
C1303	NDC31HJ-100X	C CAP.	10pF 50V J
C1304	QFV71HJ-474Z	MF CAP.	0.47μF 50V J
C1305	QETNLHM-474Z	E CAP.	0.47μF 50V M
C1306	NCB31HK-103X	C CAP.	0.01μF 50V K
C1307	QETNLHM-477Z	E CAP.	470μF 16V M
C1308	QETNLHM-107Z	E CAP.	100μF 16V M
C1309	NCB31HK-103X	C CAP.	0.01μF 50V K
C1310	NDC31HJ-221X	C CAP.	220pF 50V J
C1311	NCB31HK-103X	C CAP.	0.01μF 50V K
C1312	QENC1HM-474Z	E CAP.	0.47μF 50V M
C1313	QETNLHM-335Z	E CAP.	3.3μF 50V M
C1314	NCB31HK-103X	C CAP.	0.01μF 50V K
C1315	QETNLHM-107Z	E CAP.	100μF 16V M
C1316	QETNLHM-106Z	E CAP.	10μF 50V M
C1317	NCB31EK-473X	C CAP.	0.047μF 25V K
C1321	NDC31HJ-120X	C CAP.	12pF 50V J
C1322	NCB31EK-273X	C CAP.	0.027μF 25V K
C1323	QETNLHM-474Z	E CAP.	0.47μF 50V M
C1324	QETNLHM-106Z	E CAP.	10μF 50V M
C1325	QENC1HM-106Z	BP E CAP.	10μF 50V M
C1326	NCS21HJ-221X	C CAP.	220pF 50V J
C1341	QETNLHM-106Z	E CAP.	10μF 50V M
C1352	QFZ0097-103	MM CAP.	0.01μF 1250V K
C1354	NDC31HJ-271X	C CAP.	270pF 50V J
C1355	NDC31HJ-221X	C CAP.	220pF 50V J
C1356	NDC31HJ-331X	C CAP.	330pF 50V J
C1357	QETNLHM-477Z	E CAP.	470μF 10V M
C1365	QENC1HM-105Z	E CAP.	1μF 50V M
C1366	QENC1HM-105Z	E CAP.	1μF 50V M
C1367	QENC1HM-105Z	E CAP.	1μF 50V M
C1401	QFV71HJ-474Z	MF CAP.	0.47μF 50V J
C1423	QCS32HJ-180Z	C CAP.	18pF 500V J
C1424	QFLC2AJ-103Z	M CAP.	0.01μF 100V J
C1426	QFLC1HJ-102Z	M CAP.	1000pF 50V J
C1427	QETNLHM-107Z	E CAP.	100μF 35V M
C1428	QETNLHM-107Z	E CAP.	100μF 35V M
C1429	QETNLHM-106Z	E CAP.	10μF 50V M
C1430	QFN32AJ-472Z	M CAP.	4700pF 100V J
C1433	QETNLHM-475Z	E CAP.	4.7μF 50V M
C1435	QETMLHM-228	E CAP.	2200μF 25V M
C1436	QFV71HJ-334Z	MF CAP.	0.33μF 50V J
C1437	NCB31HK-104X	C CAP.	0.1μF 50V K
C1501	QETNLHM-477Z	E CAP.	470μF 10V M
C1502	NCB31HK-103X	C CAP.	0.01μF 50V K
C1503	QETNLHM-106Z	E CAP.	10μF 50V M
C1523	QETNLHM-476Z	E CAP.	47μF 25V M
△ C1525	QFZ000-942	MPP CAP.	9400pF 5kVH±3%
C1526	QFLC1HJ-103Z	M CAP.	0.01μF 50V J
△ C1527	QFZ0199-374	MPP CAP.	0.37μF 250V J
C1529	QFN32AJ-102Z	M CAP.	1000pF 100V J
C1531	QEZ0203-107	E CAP.	100μF 160V M
C1552	QETMLHM-108	E CAP.	1000μF 35V M
C1554	QETNLHM-475Z	E CAP.	4.7μF 250V M
C1555	QFLC2AJ-104Z	M CAP.	0.1μF 100V J

[AV-21FR3]

Symbol No.	Part No.	Part Name	Description
------------	----------	-----------	-------------

CAPACITOR

C1557	QETN1HM-107Z	E CAP.	100μF 50V M
C1571	QETN1AM-107Z	E CAP.	100μF 10V M
C1572	QETN1EM-476Z	E CAP.	47μF 25V M
C1581	QFV71HJ-104Z	MF CAP.	0.1μF 50V J
C1652	NCB31HK-473X	C CAP.	0.047μF 50V K
C1653	QETN1HM-106Z	E CAP.	10μF 50V M
C1654	QETN1CM-477Z	E CAP.	470μF 16V M
C1655	QETN1HM-106Z	E CAP.	10μF 50V M
C1656	QENCLHM-105Z	E CAP.	1μF 50V M
C1657	QETN1EM-107Z	E CAP.	100μF 25V M
C1658	QETN1EM-228	E CAP.	2200μF 25V M
C1659	QETN1HM-475Z	E CAP.	4.7μF 50V M
C1663	NCB31HK-102X	C CAP.	1000pF 50V K
C1664	QETN1CM-107Z	E CAP.	100μF 16V M
C1665	NCB31HK-103X	C CAP.	0.01μF 50V K
C1701	QETN1HM-106Z	E CAP.	10μF 50V M
C1705	QETN1CM-477Z	E CAP.	470μF 16V M
C1706	NCB31HK-104X	C CAP.	0.1μF 50V K
C1707	NCB31HK-103X	C CAP.	0.01μF 50V K
C1708	QETN1AM-108Z	E CAP.	1000μF 10V M
C1709	NCB31HK-103X	C CAP.	0.01μF 50V K
C1710	QETN1CM-107Z	E CAP.	100μF 16V M
C1711	NCB31HK-103X	C CAP.	0.01μF 50V K
C1712	NCB31HK-103X	C CAP.	0.01μF 50V K
C1713	NCB31HK-103X	C CAP.	0.01μF 50V K
C1716	NDC31HJ-181X	C CAP.	180pF 50V J
C1717	NDC31HJ-181X	C CAP.	180pF 50V J
C1718	NCB31HK-103X	C CAP.	0.01μF 50V K
C1719	QETN1HM-105Z	E CAP.	1μF 50V M
C1720	NCB31HK-103X	C CAP.	0.01μF 50V K
C1721	NCB31EK-333X	C CAP.	0.033μF 25V K
C1722	NDC31HJ-101X	C CAP.	100pF 50V J
C1724	NDC31HJ-560X	C CAP.	56pF 50V J
C1728	NDC31HJ-181X	C CAP.	180pF 50V J
C1729	NDC31HJ-181X	C CAP.	180pF 50V J
C1730	NCB31HK-103X	C CAP.	0.01μF 50V K
C1741	QETN1HM-106Z	E CAP.	10μF 50V M
C1742	QETN1HM-106Z	E CAP.	10μF 50V M
C1743	QETN1HM-106Z	E CAP.	10μF 50V M
C1744	NCB31HK-103X	C CAP.	0.01μF 50V K
C1805	QETN1CM-227Z	E CAP.	220μF 16V M
C1806	QETN1CM-477Z	E CAP.	470μF 16V M
C1811	QETN1HM-106Z	E CAP.	10μF 50V M
C1821	QETN1CM-107Z	E CAP.	100μF 16V M
C1822	NCB31HK-103X	C CAP.	0.01μF 50V K
C1823	NDC31HJ-330X	C CAP.	33pF 50V J
C1824	NDC31HJ-390X	C CAP.	39pF 50V J
C1825	QETN1HM-105Z	E CAP.	1μF 50V M
C1826	NCB31HK-103X	C CAP.	0.01μF 50V K
C1827	NCB31HK-103X	C CAP.	0.01μF 50V K
C1830	NDC31HJ-151X	C CAP.	150pF 50V J
C1831	QFV71HJ-104Z	MF CAP.	0.1μF 50V J
C1832	NCB31HK-103X	C CAP.	0.01μF 50V K
C1833	NDC31HJ-680X	C CAP.	68pF 50V J
C1834	NDC31HJ-330X	C CAP.	33pF 50V J
C1835	NDC31HJ-221X	C CAP.	220pF 50V J
C1836	QETN1HM-335Z	E CAP.	3.3μF 50V M
C1837	QETN1HM-335Z	E CAP.	3.3μF 50V M
C1838	QETN1HM-335Z	E CAP.	3.3μF 50V M
C1841	NCB31HK-152X	C CAP.	1500pF 50V K
C1843	NCB31HK-103X	C CAP.	0.01μF 50V K
C1844	NCB31HK-103X	C CAP.	0.01μF 50V K
C1845	NCB31HK-103X	C CAP.	0.01μF 50V K
C1846	NCB31HK-103X	C CAP.	0.01μF 50V K
C1847	QETN1HM-475Z	E CAP.	4.7μF 50V M
C1848	NCB31HK-103X	C CAP.	0.01μF 50V K
C1849	NCB31HK-103X	C CAP.	0.01μF 50V K
C1852	NCB31HK-103X	C CAP.	0.01μF 50V K
C1853	NCB31HK-103X	C CAP.	0.01μF 50V K
C1854	QETN1CM-107Z	E CAP.	100μF 16V M
C1855	QETN1HM-106Z	E CAP.	10μF 50V M
C1856	NCB31HK-104X	C CAP.	0.1μF 50V K
△ C1901	QFZ9078-224	MPF CAP.	0.22μFAC275V M
△ C1904	QCZ9015-102	C CAP.	1000pFAC250V Z
△ C1905	QCZ9015-102	C CAP.	1000pFAC250V Z
△ C1907	QCZ9015-102	C CAP.	1000pFAC250V Z
△ C1909	QEZO552-127	E CAP.	120μF 400V M
△ C1910	QFZ9078-473	MPF CAP.	0.047μFAC275V M

Symbol No.	Part No.	Part Name	Description
------------	----------	-----------	-------------

CAPACITOR

C1922	QFLC1HJ-104Z	M CAP.	0.1μF 50V J
C1924	QETN1HM-475Z	E CAP.	4.7μF 50V M
C1925	QETN1VM-476Z	E CAP.	47μF 35V M
C1926	QFLC1HJ-332Z	M CAP.	3300pF 50V J
△ C1929	QFKA2JK-103	MM CAP.	0.01μF 630V K
△ C1931	QCZ0864-681	C CAP.	680pF 2kV K
C1932	NDC31HJ-681X	C CAP.	680pF 50V J
C1941	QCZ0864-561	C CAP.	560pF 2kV K
C1942	QEZO203-107	E CAP.	100μF 160V M
C1944	QCB32HK-222Z	C CAP.	2200pF 500V K
C1945	QEH1EM-108Z	E CAP.	1000μF 25V M
C1946	QETN1EM-108Z	E CAP.	1000μF 25V M
C1947	QCB32HK-222Z	C CAP.	2200pF 500V K
C1948	QETN1EM-108Z	E CAP.	1000μF 25V M
C1949	NDC31HJ-471X	C CAP.	470pF 50V J
C1976	QETN1EM-227Z	E CAP.	220μF 25V M
C1977	QETN1CM-227Z	E CAP.	220μF 16V M
C1978	QETN1EM-227Z	E CAP.	220μF 25V M
C1979	QETN1AM-227Z	E CAP.	220μF 10V M
△ C1991	QCZ9079-102	C CAP.	1000pFAC250V M
△ C1992	QCZ9079-102	C CAP.	1000pFAC250V M
△ C1993	QCZ9079-222	C CAP.	2200pFAC250V M

TRANSFORMER

T1501	QQR1244-001	DRIVE TRANSF.
△ T1522	QQH0134-001	F. B. TRANSF.
△ T1921	QQS0161-001	SW TRANSF.

COIL

L1001	QQL244K-8R2Z	COIL	8.2μH K
L1101	QQL244J-2R2Z	COIL	2.2μH J
L1108	QQL244K-8R2Z	COIL	8.2μH K
L1551	QQL2034-360	INDUCTOR	
L1701	QQL244J-5R6Z	COIL	5.6μH J
L1821	NQL092K-4R7X	COIL	4.7μH
L1822	NQL092K-4R7X	COIL	4.7μH
L1823	NQL092K-4R7X	COIL	4.7μH
L1824	NQL092K-4R7X	COIL	4.7μH
L1825	NQL092K-4R7X	COIL	4.7μH
L1826	NQL092K-4R7X	COIL	4.7μH
L1827	NQL092K-4R7X	COIL	4.7μH
L1828	QQL244K-8R2Z	COIL	8.2μH K
L1941	QQL26AK-820Z	COIL	82μH K
L1942	QQL244J-4R7Z	INDUCTOR	
L1943	QQL244J-4R7Z	INDUCTOR	

DIODE

D1001	MTZJ33A-T2	ZENER DIODE	
D1301	MTZJ9.1B-T2	ZENER DIODE	
D1302	MTZJ9.1B-T2	ZENER DIODE	
D1305	AK04-T2	SB DIODE	
D1306	QRE121J-121Y	C R	120Ω 1/2W J
D1341	MA111-X	SI DIODE	
D1372	MA111-X	SI DIODE	
D1373	MA111-X	SI DIODE	
D1421	MTZJ75-T2	ZENER DIODE	
D1423	1SR124-400A-T2	SI DIODE	
D1425	MA111-X	SI DIODE	
D1427	MTZJ27B-T2	ZENER DIODE	
D1501	MTZJ6.8C-T2	ZENER DIODE	
D1551	RGP10J-5025-T3	SI DIODE	
D1552	RGP10J-5025-T3	SI DIODE	
D1553	MTZJ9.1B-T2	ZENER DIODE	
D1554	MA111-X	SI DIODE	
D1557	1SR124-400A-T2	SI DIODE	
D1571	MTZJ7.5S-T2	ZENER DIODE	
D1581	MTZJ20B-T2	ZENER DIODE	
D1582	RGP10J-5025-T3	SI DIODE	
D1651	MA111-X	SI DIODE	
D1652	MTZJ12C-T2	ZENER DIODE	
D1653	MA111-X	SI DIODE	
D1654	MTZJ12C-T2	ZENER DIODE	
D1655	MA111-X	SI DIODE	
D1656	MA111-X	SI DIODE	
D1657	MA111-X	SI DIODE	

[AV-21FR3]

△ Symbol No.	Part No.	Part Name	Description	△ Symbol No.	Part No.	Part Name	Description
DIODE				IC			
D1701	MA111-X	SI. DIODE		IC1301	NN5198K	I C	
D1704	SLR-342VR-T16	LED		IC1371	TC4053BP/W/	I C	
D1705	SLR-342DU-T16	LED		IC1421	AN5522	I C	
D1707	MA111-X	SI. DIODE		IC1651	AN5265	I C	
D1731	MA111-X	SI. DIODE		△ IC1701	MN1873287JJ1	I C (MCU)	
D1801	MA111-X	SI. DIODE		IC1702	AT24C08-21DMG	I C	(SERVICE)
△ D1901	G2SBA60	BRIDGE DIODE		IC1703	L78LR05E-MA	I C	
D1921	RGP10J-5025-T3	SI. DIODE		IC1704	PIC-4 7143SY	IR DETECT UNIT	
D1925	RGP10J-5025-T3	SI. DIODE		△ IC1821	SDA5553-V006	I C (MCU)	
D1927	MTZJ36A-T2	ZENER DIODE		△ IC1822	PQ2L3252MS-X	I C	
D1928	MTZJ3.3A-T2	ZENER DIODE		△ IC1921	STR-W5753A/F5	I C	
D1929	MTZJ3.3A-T2	ZENER DIODE		△ IC1971	BA17809T	I C	
D1930	RGP10H-5010-T3	SI. DIODE		IC1972	BA17805T	I C	
D1931	MA111-X	SI. DIODE		OTHERS			
D1933	MTZJ16C-T2	ZENER DIODE			LC30114-001C-H	LED HOLDER	
D1941	RU3AM-LFC4	SI. DIODE		△ CP1981	CM35921-005-H	CDS HOLDER	
D1942	RU3YX-LFC4	SI. DIODE		△ CP1982	ICP-N25-Y	I.C. PROTECT	
D1943	RGP10J-5025-T3	SI. DIODE		△ F1901	ICP-N75-Y	I.C. PROTECT	
D1982	MA111-X	SI. DIODE		△ FC1901	QMF51E2-3R15J4	FUSE	3.15A
D1983	MA111-X	SI. DIODE			CEM002-001Z	FUSE CLIP	(X2)
TRANSISTOR					FR1557	QRJ146J-2R2X	2.2Ω 1/4W J
Q1102	2SC5083/L-P/-T	SI. TRANSISTOR		J1002	QNN0384-001	C R	
Q1301	2SB709A/QR/-X	SI. TRANSISTOR		J1003	QNN0281-003	PIN JACK	
Q1302	2SD001A/QR/-X	SI. TRANSISTOR		J1004	QNN0281-002	PIN JACK	
Q1351	STC344-T	SI. TRANSISTOR		△ J1005	QNS0197-001	3.5 JACK	
Q1352	STC344-T	SI. TRANSISTOR		K1351	QQR0621-002Z	FERRITE BEADS	
Q1353	STC344-T	SI. TRANSISTOR		K1421	QQR1113-001Z	FERRITE BEADS	
Q1371	2SD001A/QR/-X	SI. TRANSISTOR		K1941	QQR1113-001Z	FERRITE BEADS	
Q1372	2SD001A/QR/-X	SI. TRANSISTOR		K1942	QQR1113-001Z	FERRITE BEADS	
Q1373	2SD001A/QR/-X	SI. TRANSISTOR		K1943	QQR1113-001Z	FERRITE BEADS	
Q1401	DTC124ESA-T	DIGI. TRANSISTOR		△ LF1901	QQR0527-002	LINE FILTER	
Q1402	2SD001A/QR/-X	SI. TRANSISTOR		PC1701	P1241-04	PHOTO CONDUCTOR	
Q1403	2SD001A/QR/-X	SI. TRANSISTOR		S1701	QSW0619-003Z	TACT SWITCH	VOL+
Q1404	2SD001A/QR/-X	SI. TRANSISTOR		S1702	QSW0619-003Z	TACT SWITCH	VOL-
△ Q1521	2SC2655/Y/-T	SI. TRANSISTOR	H. OUT	S1703	QSW0619-003Z	TACT SWITCH	CH+
Q1522	2SD2627-YB11	POWER TRANSISTOR		S1704	QSW0619-003Z	TACT SWITCH	CH-
Q1571	2SA1208/ST/Z1-T	SI. TRANSISTOR		S1705	QSW0619-003Z	TACT SWITCH	MENU
Q1572	2SD001A/QR/-X	SI. TRANSISTOR		△ S1901	QSW0750-001	PUSH SWITCH	POWER SW
Q1651	2SD001A/QR/-X	SI. TRANSISTOR		SF1102	QAX0666-002	SAW FILTER	
Q1652	2SD001A/QR/-X	SI. TRANSISTOR		SF1122	QAX0325-001	SAW FILTER	
Q1653	2SB709A/QR/-X	SI. TRANSISTOR		△ SK1351	QNZ0537-001	CRT SOCKET	or QNZ0536-001
Q1702	2SD001A/QR/-X	SI. TRANSISTOR		△ TH1901	QAD0121-9R0	THERMISTOR	or QAD0119-9R0
Q1703	UN2212-X	DIGI. TRANSISTOR		△ TU1001	QAU0282-001	TUNER	
Q1708	UN2212-X	DIGI. TRANSISTOR		△ VA1901	ERZV10V621CS	VARISTOR	or QAF0052-621
Q1709	2SB709A/QR/-X	SI. TRANSISTOR		△ X1301	QAX0705-001Z	CRYSTAL	
Q1803	2SC1815/YG/-T	SI. TRANSISTOR		X1302	CE41651-001Z	X-TAL	
Q1804	2SD001A/QR/-X	SI. TRANSISTOR		X1701	QAX0307-001	C RESONATOR	
Q1821	2SB709A/QR/-X	SI. TRANSISTOR		X1821	QAX0669-001Z	CRYSTAL	
Q1822	2SD001A/QR/-X	SI. TRANSISTOR					
Q1824	2SD001A/QR/-X	SI. TRANSISTOR					
Q1825	UN2212-X	DIGI. TRANSISTOR					
Q1826	2SC5083/L-P/-T	SI. TRANSISTOR					
Q1974	2SA966/OY/-T	SI. TRANSISTOR					
Q1975	UN2212-X	DIGI. TRANSISTOR					

PRINTED WIRING BOARD PARTS LIST

[AV-21FMG3B]

MAIN P.W. BOARD ASS'Y (SCG-1432A-H2)

△ Symbol No.	Part No.	Part Name	Description
RESISTOR			
R1002	NRSA63J-221X	MG R	220Ω 1/16W J
R1008	NRSA63J-221X	MG R	220Ω 1/16W J
R1004	NRSA63J-563X	MG R	56kΩ 1/16W J
R1102	NRSA63J-750X	MG R	75Ω 1/16W J
R1108	NRSA63J-100X	MG R	10Ω 1/16W J
R1109	NRSA63J-682X	MG R	6.8kΩ 1/16W J
R1110	NRSA63J-272X	MG R	2.7kΩ 1/16W J
R1111	NRSA63J-181X	MG R	180Ω 1/16W J
R1112	NRSA63J-220X	MG R	22Ω 1/16W J
R1113	NRSA63J-101X	MG R	100Ω 1/16W J
R1114	NRSA63J-472X	MG R	4.7kΩ 1/16W J
R1115	NRSA63J-222X	MG R	2.2kΩ 1/16W J
R1117	NRSA63J-0R0X	MG R	0.0Ω 1/16W J
R1118	NRSA63J-222X	MG R	2.2kΩ 1/16W J
R1120	NRSA63J-391X	MG R	390Ω 1/16W J
R1121	NRSA63J-221X	MG R	220Ω 1/16W J
R1139	NRSA02J-184X	MG R	180kΩ 1/10W J
R1161	NRSA63J-102X	MG R	1kΩ 1/16W J
R1162	NRSA63J-122X	MG R	1.2kΩ 1/16W J
R1163	NRSA63J-222X	MG R	2.2kΩ 1/16W J
R1164	NRSA63J-221X	MG R	220Ω 1/16W J
R1165	NRSA63J-220X	MG R	22Ω 1/16W J
R1166	NRSA63J-821X	MG R	820Ω 1/16W J
R1301	NRSA63J-221X	MG R	220Ω 1/16W J
R1302	NRSA63J-472X	MG R	4.7kΩ 1/16W J
R1308	NRSA63J-101X	MG R	100Ω 1/16W J
R1304	NRSA63J-101X	MG R	100Ω 1/16W J
R1305	NRSA63J-101X	MG R	100Ω 1/16W J
R1306	NRSA63J-221X	MG R	220Ω 1/16W J
R1307	NRSA63J-122X	MG R	1.2kΩ 1/16W J
R1308	NRSA63J-182X	MG R	1.8kΩ 1/16W J
R1312	NRSA63J-0R0X	MG R	0.0Ω 1/16W J
R1313	NRSA63J-102X	MG R	1kΩ 1/16W J
R1314	NRSA63J-102X	MG R	1kΩ 1/16W J
R1321	NRSA63J-152X	MG R	1.5kΩ 1/16W J
R1322	NRSA63J-272X	MG R	2.7kΩ 1/16W J
R1323	NRSA63J-103X	MG R	10kΩ 1/16W J
R1324	NRSA63J-102X	MG R	1kΩ 1/16W J
R1326	NRSA63J-101X	MG R	100Ω 1/16W J
R1327	NRSA02J-475X	MG R	4.7MΩ 1/10W J
R1341	NRSA63J-332X	MG R	3.3kΩ 1/16W J
R1347	NRSA63J-392X	MG R	3.9kΩ 1/16W J
R1349	NRSA63J-472X	MG R	4.7kΩ 1/16W J
R1351	NRSA63J-151X	MG R	150Ω 1/16W J
R1352	NRSA63J-151X	MG R	150Ω 1/16W J
R1353	NRSA63J-151X	MG R	150Ω 1/16W J
R1354	NRSA63J-331X	MG R	330Ω 1/16W J
R1355	NRSA63J-331X	MG R	330Ω 1/16W J
R1356	NRSA63J-331X	MG R	330Ω 1/16W J
R1357	NRSA63J-101X	MG R	100Ω 1/16W J
R1358	NRSA63J-101X	MG R	100Ω 1/16W J
R1359	NRSA63J-101X	MG R	100Ω 1/16W J
R1360	QRZ0107-152Z	C R	1.5kΩ 1/2W K
R1361	QRZ0107-152Z	C R	1.5kΩ 1/2W K
R1362	QRZ0107-152Z	C R	1.5kΩ 1/2W K
R1363	QRL029J-123	OM R	12kΩ 2W J
R1364	QRL029J-123	OM R	12kΩ 2W J
R1365	QRL029J-123	OM R	12kΩ 2W J
R1366	NRSA63J-182X	MG R	1.8kΩ 1/16W J
R1367	NRSA63J-182X	MG R	1.8kΩ 1/16W J
R1368	NRSA63J-182X	MG R	1.8kΩ 1/16W J
R1372	NRSA63J-0R0X	MG R	0.0Ω 1/16W J
R1374	NRSA63J-392X	MG R	3.9kΩ 1/16W J
R1401	NRSA63J-103X	MG R	10kΩ 1/16W J
R1421	NRSA63J-472X	MG R	4.7kΩ 1/16W J
R1423	NRSA63J-0R0X	MG R	0.0Ω 1/16W J
R1424	NRSA63J-0R0X	MG R	0.0Ω 1/16W J
R1425	NRSA63J-332X	MG R	3.3kΩ 1/16W J
R1426	NRSA63J-0R0X	MG R	0.0Ω 1/16W J
R1429	NRSA63J-103X	MG R	10kΩ 1/16W J
R1430	NRSA63J-823X	MG R	82kΩ 1/16W J
R1431	NRSA63J-103X	MG R	10kΩ 1/16W J

△ Symbol No.	Part No.	Part Name	Description
RESISTOR			
R1432	QRE121J-3R9Y	C R	3.9Ω 1/2W J
R1433	QRE121J-2R7Y	C R	2.7Ω 1/2W J
R1436	NRSA63J-823X	MG R	82kΩ 1/16W J
R1437	NRSA63J-822X	MG R	8.2kΩ 1/16W J
R1438	NRSA63J-223X	MG R	22kΩ 1/16W J
R1439	NRSA63J-104X	MG R	100kΩ 1/16W J
R1440	QRE121J-471Y	C R	47Ω 1/2W J
R1441	NRSA63J-822X	MG R	8.2kΩ 1/16W J
R1442	NRSA63J-103X	MG R	10kΩ 1/16W J
R1443	QRE121J-1R0Y	C R	1.0Ω 1/2W J
R1453	NRSA63J-272X	MG R	2.7kΩ 1/16W J
R1502	NRSA63J-0R0X	MG R	0.0Ω 1/16W J
R1508	NRSA63J-682X	MG R	6.8kΩ 1/16W J
R1525	QRL029J-180	OM R	18Ω 2W J
R1526	QRE121J-271Y	C R	27Ω 1/2W J
R1529	QRL029J-681	OM R	68Ω 2W J
R1531	NRSA63J-331X	MG R	33Ω 1/16W J
R1532	NRSA63J-102X	MG R	1kΩ 1/16W J
△ R1551	QRZ9011-1R0	F R	1.0Ω 1/2W J
R1552	QRJ146J-2R2X	C R	2.2Ω 1/4W J
R1554	QRE121J-681Y	C R	68Ω 1/2W J
R1571	QRE121J-222Y	C R	2.2kΩ 1/2W J
R1573	QRT029J-1R5	MF R	1.5Ω 2W J
R1574	QRT029J-1R5	MF R	1.5Ω 2W J
R1576	QRE121J-223Y	C R	22kΩ 1/2W J
R1577	NRSA63J-392X	MG R	3.9kΩ 1/16W J
R1578	NRSA63J-103X	MG R	10kΩ 1/16W J
R1581	QRE121J-182Y	C R	1.8kΩ 1/2W J
R1582	NRSA63J-223X	MG R	22kΩ 1/16W J
R1588	NRSA63J-393X	MG R	39kΩ 1/16W J
R1651	NRSA63J-472X	MG R	4.7kΩ 1/16W J
R1652	NRSA63J-102X	MG R	1kΩ 1/16W J
R1653	NRSA63J-331X	MG R	33Ω 1/16W J
R1654	NRSA63J-223X	MG R	22kΩ 1/16W J
R1655	NRSA63J-473X	MG R	47kΩ 1/16W J
R1656	NRSA63J-822X	MG R	8.2kΩ 1/16W J
R1657	NRSA63J-222X	MG R	2.2kΩ 1/16W J
R1658	NRSA63J-222X	MG R	2.2kΩ 1/16W J
R1659	QRE121J-4R7Y	C R	4.7Ω 1/2W J
R1660	NRSA63J-153X	MG R	15kΩ 1/16W J
R1661	QRE121J-271Y	C R	27Ω 1/2W J
R1662	QRE121J-271Y	C R	27Ω 1/2W J
R1664	NRSA63J-682X	MG R	6.8kΩ 1/16W J
R1665	NRSA63J-103X	MG R	10kΩ 1/16W J
R1666	NRSA63J-101X	MG R	100Ω 1/16W J
R1667	QRE121J-101Y	C R	10Ω 1/2W J
△ R1668	QRT029J-5R6	MF R	5.6Ω 2W J
R1701	NRSA63J-562X	MG R	5.6kΩ 1/16W J
R1702	NRSA63J-682X	MG R	6.8kΩ 1/16W J
R1708	NRSA63J-392X	MG R	3.9kΩ 1/16W J
R1704	NRSA63J-221X	MG R	22Ω 1/16W J
R1705	NRSA63J-221X	MG R	22Ω 1/16W J
R1706	NRSA63J-561X	MG R	56Ω 1/16W J
R1707	NRSA63J-561X	MG R	56Ω 1/16W J
R1708	NRSA63J-102X	MG R	1kΩ 1/16W J
R1709	NRSA63J-472X	MG R	4.7kΩ 1/16W J
R1710	NRSA63J-472X	MG R	4.7kΩ 1/16W J
R1711	NRSA63J-472X	MG R	4.7kΩ 1/16W J
R1712	NRSA63J-472X	MG R	4.7kΩ 1/16W J
R1713	NRSA63J-472X	MG R	4.7kΩ 1/16W J
R1714	NRSA63J-472X	MG R	4.7kΩ 1/16W J
R1715	NRSA63J-221X	MG R	22Ω 1/16W J
R1716	NRSA63J-221X	MG R	22Ω 1/16W J
R1718	NRSA63J-561X	MG R	56Ω 1/16W J
R1719	NRSA63J-102X	MG R	1kΩ 1/16W J
R1720	NRSA63J-472X	MG R	4.7kΩ 1/16W J
△ R1721	NRSA63J-103X	MG R	10kΩ 1/16W J
R1723	QRL029J-270	OM R	27Ω 3W J
R1725	NRSA63J-102X	MG R	1kΩ 1/16W J
R1726	NRSA63J-472X	MG R	4.7kΩ 1/16W J
R1727	NRSA63J-153X	MG R	15kΩ 1/16W J
R1728	NRSA63J-102X	MG R	1kΩ 1/16W J

[AV-21FMG3B]

△ Symbol No.	Part No.	Part Name	Description
RESISTOR			
R1729	NRSA63J-102X	MG R	1kΩ 1/16W J
R1730	NRSA63J-103X	MG R	10kΩ 1/16W J
R1731	NRSA63J-472X	MG R	4.7kΩ 1/16W J
R1736	NRSA63J-823X	MG R	82kΩ 1/16W J
R1737	NRSA63J-104X	MG R	100kΩ 1/16W J
R1738	NRSA63J-103X	MG R	10kΩ 1/16W J
R1739	NRSA63J-103X	MG R	10kΩ 1/16W J
R1740	NRSA63J-392X	MG R	3.9kΩ 1/16W J
R1741	NRSA63J-561X	MG R	560Ω 1/16W J
R1742	NRSA63J-563X	MG R	56kΩ 1/16W J
R1746	NRSA63J-103X	MG R	10kΩ 1/16W J
R1747	NRSA63J-0R0X	MG R	0.0Ω 1/16W J
R1748	NRSA63J-101X	MG R	100Ω 1/16W J
R1749	NRSA63J-472X	MG R	4.7kΩ 1/16W J
R1771	NRSA63J-821X	MG R	820Ω 1/16W J
R1772	NRSA63J-821X	MG R	820Ω 1/16W J
R1791	NRSA63J-221X	MG R	220Ω 1/16W J
R1792	NRSA63J-221X	MG R	220Ω 1/16W J
R1793	NRSA63J-221X	MG R	220Ω 1/16W J
R1794	NRSA63J-221X	MG R	220Ω 1/16W J
R1795	NRSA63J-221X	MG R	220Ω 1/16W J
R1796	NRSA63J-103X	MG R	10kΩ 1/16W J
R1797	NRSA63J-153X	MG R	15kΩ 1/16W J
R1802	NRSA63J-750X	MG R	75Ω 1/16W J
R1806	QRE121J-271Y	C R	270Ω 1/2W J
R1807	NRSA63J-680X	MG R	68Ω 1/16W J
R1810	QRG01GJ-560	OM R	56Ω 1W J
R1811	NRSA63J-221X	MG R	220Ω 1/16W J
R1815	QRE121J-181Y	C R	180Ω 1/2W J
R1816	NRSA63J-681X	MG R	680Ω 1/16W J
R1817	NRSA63J-472X	MG R	4.7kΩ 1/16W J
R1901	QRF104K-3R9	UNF R	3.9Ω 10W K
R1903	QRL029J-104	OM R	100kΩ 2W J
R1904	QRL039J-151	OM R	150Ω 3W J
R1906	QRL029J-104	OM R	100kΩ 2W J
R1921	QRE121J-2R2Y	C R	2.2Ω 1/2W J
R1922	QRE121J-221Y	C R	220Ω 1/2W J
R1923	QRM034J-R22	MP R	0.22Ω 3W J
R1928	QRL039J-683	OM R	68kΩ 3W J
R1933	QRE121J-4R7Y	C R	4.7Ω 1/2W J
R1934	NRSA63J-683X	MG R	68kΩ 1/16W J
R1935	QRE121J-562Y	C R	5.6kΩ 1/2W J
R1974	NRSA63J-222X	MG R	2.2kΩ 1/16W J
R1976	QRT029J-8R2	MF R	8.2Ω 2W J
R1977	QRE121J-122Y	C R	1.2kΩ 1/2W J
R1978	NRSA63J-473X	MG R	47kΩ 1/16W J
R1979	QRL039J-220	OM R	22Ω 3W J
R1980	QRL029J-152	OM R	1.5kΩ 2W J
△ R1991	QRZ9046-825Z	C R	8.2kΩ 1/2W K

CAPACITOR

C1001	QETNLHM-106Z	E CAP.	10μF 50V M
C1002	NCB31HK-103X	C CAP.	0.01μF 50V K
C1004	QETNLHM-477Z	E CAP.	470μF 16V M
C1005	QFV71HJ-104Z	MF CAP.	0.1μF 50V J
C1008	QETNLHM-475Z	E CAP.	4.7μF 50V M
C1103	QETNLHM-476Z	E CAP.	47μF 25V M
C1104	NCB31HK-472X	C CAP.	4700pF 50V K
C1105	NCB31HK-472X	C CAP.	4700pF 50V K
C1106	NCB31HK-472X	C CAP.	4700pF 50V K
C1107	NCB31HK-472X	C CAP.	4700pF 50V K
C1109	NCB31HK-472X	C CAP.	4700pF 50V K
C1110	NRSA63J-0R0X	MG R	0.0Ω 1/16W J
C1112	QETNLHM-476Z	E CAP.	47μF 25V M
C1113	NCB31HK-472X	C CAP.	4700pF 50V K
C1114	NCB31HK-103X	C CAP.	0.01μF 50V K
C1115	NCB31HK-103X	C CAP.	0.01μF 50V K
C1116	NCB31HK-103X	C CAP.	0.01μF 50V K
C1117	QFV71HJ-224Z	MF CAP.	0.22μF 50V J
C1119	QETNLHM-474Z	E CAP.	0.47μF 50V M
C1120	NDC31HJ-121X	C CAP.	120pF 50V J
C1121	NCB31HK-103X	C CAP.	0.01μF 50V K
C1122	NCB31HK-103X	C CAP.	0.01μF 50V K
C1162	NCB31HK-152X	C CAP.	1500pF 50V K

△ Symbol No.	Part No.	Part Name	Description
CAPACITOR			
C1164	NCB31HK-103X	C CAP.	0.01μF 50V K
C1165	NCB31HK-103X	C CAP.	0.01μF 50V K
C1166	NCB31HK-104X	C CAP.	0.1μF 50V K
C1301	NCB31HK-123X	C CAP.	0.012μF 50V K
C1302	QETNLHM-475Z	E CAP.	4.7μF 50V M
C1303	NDC31HJ-100X	C CAP.	10pF 50V J
C1304	QFV71HJ-474Z	MF CAP.	0.47μF 50V J
C1305	QETNLHM-474Z	E CAP.	0.47μF 50V M
C1306	NCB31HK-103X	C CAP.	0.01μF 50V K
C1307	QETNLHM-477Z	E CAP.	470μF 16V M
C1308	QETNLHM-107Z	E CAP.	100μF 16V M
C1309	NCB31HK-103X	C CAP.	0.01μF 50V K
C1310	NDC31HJ-221X	C CAP.	220pF 50V J
C1311	NCB31HK-103X	C CAP.	0.01μF 50V K
C1312	QENC1HM-474Z	E CAP.	0.47μF 50V M
C1313	QETNLHM-335Z	E CAP.	3.3μF 50V M
C1314	NCB31HK-103X	C CAP.	0.01μF 50V K
C1315	QETNLHM-107Z	E CAP.	100μF 16V M
C1316	QETNLHM-106Z	E CAP.	10μF 50V M
C1317	NCB31EK-473X	C CAP.	0.047μF 25V K
C1321	NDC31HJ-120X	C CAP.	12pF 50V J
C1322	NCB31EK-273X	C CAP.	0.027μF 25V K
C1323	QETNLHM-474Z	E CAP.	0.47μF 50V M
C1324	QETNLHM-106Z	E CAP.	10μF 50V M
C1325	QENC1HM-106Z	BP E CAP.	10μF 50V M
C1326	NCS21HJ-221X	C CAP.	220pF 50V J
C1341	QETNLHM-106Z	E CAP.	10μF 50V M
C1352	QFZ0097-103	MM CAP.	0.01μF 1250V K
C1354	NDC31HJ-271X	C CAP.	270pF 50V J
C1355	NDC31HJ-221X	C CAP.	220pF 50V J
C1356	NDC31HJ-331X	C CAP.	330pF 50V J
C1357	QETNLHM-477Z	E CAP.	470μF 10V M
C1365	QENC1HM-105Z	E CAP.	1μF 50V M
C1366	QENC1HM-105Z	E CAP.	1μF 50V M
C1367	QENC1HM-105Z	E CAP.	1μF 50V M
C1401	QFV71HJ-474Z	MF CAP.	0.47μF 50V J
C1423	QCS32HJ-180Z	C CAP.	18pF 500V J
C1424	QFLC2AJ-103Z	M CAP.	0.01μF 100V J
C1426	QFLC1HJ-102Z	M CAP.	1000pF 50V J
C1427	QETNLHM-107Z	E CAP.	100μF 35V M
C1428	QETNLHM-107Z	E CAP.	100μF 35V M
C1429	QETNLHM-106Z	E CAP.	10μF 50V M
C1430	QFN32AJ-472Z	M CAP.	4700pF 100V J
C1433	QETNLHM-475Z	E CAP.	4.7μF 50V M
C1435	QETNLHM-228	E CAP.	2200pF 25V M
C1436	QFV71HJ-334Z	MF CAP.	0.33μF 50V J
C1437	NCB31HK-104X	C CAP.	0.1μF 50V K
C1501	QETNLHM-477Z	E CAP.	470μF 10V M
C1502	NCB31HK-103X	C CAP.	0.01μF 50V K
C1503	QETNLHM-106Z	E CAP.	10μF 50V M
C1523	QETNLHM-476Z	E CAP.	47μF 25V M
△ C1525	QFZ0200-972	MPP CAP.	970pF 1.5kVH±3%
C1526	QFLC1HJ-103Z	M CAP.	0.01μF 50V J
△ C1527	QFZ0199-334	MPP CAP.	0.33μF 250V J
C1529	QFN32AJ-102Z	M CAP.	1000pF 100V J
C1531	QEZ0203-107	E CAP.	100μF 160V M
C1552	QETNLHM-108	E CAP.	1000μF 35V M
C1554	QETNLHM-475Z	E CAP.	4.7μF 250V M
C1555	QFLC2AJ-104Z	M CAP.	0.1μF 100V J
C1557	QETNLHM-107Z	E CAP.	100μF 50V M
C1571	QETNLHM-107Z	E CAP.	100μF 10V M
C1572	QETNLHM-476Z	E CAP.	47μF 25V M
C1581	QFV71HJ-104Z	MF CAP.	0.1μF 50V J
C1652	NCB31HK-473X	C CAP.	0.047μF 50V K
C1653	QETNLHM-106Z	E CAP.	10μF 50V M
C1654	QETNLHM-477Z	E CAP.	470μF 16V M
C1655	QETNLHM-106Z	E CAP.	10μF 50V M
C1656	QENC1HM-105Z	E CAP.	1μF 50V M
C1657	QETNLHM-107Z	E CAP.	100μF 25V M
C1658	QETNLHM-227Z	E CAP.	220pF 25V M
C1659	QETNLHM-475Z	E CAP.	4.7μF 50V M
C1660	NCB31HK-102X	C CAP.	1000pF 50V K
C1664	QETNLHM-107Z	E CAP.	100μF 16V M
C1665	NCB31HK-103X	C CAP.	0.01μF 50V K
C1701	QETNLHM-106Z	E CAP.	10μF 50V M
C1705	QETNLHM-477Z	E CAP.	470μF 16V M

[AV-21FMG3B]

Symbol No.	Part No.	Part Name	Description
------------	----------	-----------	-------------

CAPACITOR

C1706	NCB31HK-104X	C CAP.	0.1μF 50V K
C1707	NCB31HK-103X	C CAP.	0.01μF 50V K
C1708	QETNLIAM-108Z	E CAP.	1000μF 10V M
C1709	NCB31HK-103X	C CAP.	0.01μF 50V K
C1710	QETNLIAM-107Z	E CAP.	100μF 16V M
C1711	NCB31HK-103X	C CAP.	0.01μF 50V K
C1712	NCB31HK-103X	C CAP.	0.01μF 50V K
C1713	NCB31HK-103X	C CAP.	0.01μF 50V K
C1716	NDC31HJ-181X	C CAP.	180pF 50V J
C1717	NDC31HJ-181X	C CAP.	180pF 50V J
C1718	NCB31HK-103X	C CAP.	0.01μF 50V K
C1719	QETNLIAM-105Z	E CAP.	1μF 50V M
C1720	NCB31HK-103X	C CAP.	0.01μF 50V K
C1721	NCB31EK-333X	C CAP.	0.033μF 25V K
C1722	NDC31HJ-101X	C CAP.	100pF 50V J
C1724	NDC31HJ-560X	C CAP.	56pF 50V J
C1728	NDC31HJ-181X	C CAP.	180pF 50V J
C1729	NDC31HJ-181X	C CAP.	180pF 50V J
C1730	NCB31HK-103X	C CAP.	0.01μF 50V K
C1741	QETNLIAM-106Z	E CAP.	10μF 50V M
C1742	QETNLIAM-106Z	E CAP.	10μF 50V M
C1743	QETNLIAM-106Z	E CAP.	10μF 50V M
C1744	NCB31HK-103X	C CAP.	0.01μF 50V K
C1805	QETNLIAM-227Z	E CAP.	220μF 16V M
C1806	QETNLIAM-477Z	E CAP.	470μF 16V M
C1811	QETNLIAM-106Z	E CAP.	10μF 50V M
C1841	NCB31HK-152X	C CAP.	1500pF 50V K
△ C1901	QFZ9078-224	MPF CAP.	0.22μFAC25V M
△ C1904	QCZ9015-102	C CAP.	1000pFAC250V Z
△ C1905	QCZ9015-102	C CAP.	1000pFAC250V Z
△ C1907	QCZ9015-102	C CAP.	1000pFAC250V Z
△ C1909	QEZO52-127	E CAP.	120μF 400V M
△ C1910	QFZ9078-473	MPF CAP.	0.047μFAC25V M
C1922	QFLCLHJ-104Z	M CAP.	0.1μF 50V J
C1924	QETNLIAM-475Z	E CAP.	4.7μF 50V M
C1925	QETNLIAM-476Z	E CAP.	47μF 35V M
C1926	QFLCLHJ-332Z	M CAP.	3300pF 50V J
△ C1929	QFKAZJK-103	MM CAP.	0.01μF 630V K
△ C1931	QCZ0364-681	C CAP.	680pF 2kV K
C1932	NDC31HJ-681X	C CAP.	680pF 50V J
C1941	QCZ0364-561	C CAP.	560pF 2kV K
C1942	QEZO03-107	E CAP.	100μF 160V M
C1944	QCB32HK-222Z	C CAP.	2200pF 500V K
C1945	QEHRIEM-108Z	E CAP.	1000μF 25V M
C1946	QETNLIAM-108Z	E CAP.	1000μF 25V M
C1947	QCB32HK-222Z	C CAP.	2200pF 500V K
C1948	QETNLIAM-108Z	E CAP.	1000μF 25V M
C1949	NDC31HJ-471X	C CAP.	470pF 50V J
C1961	QETNLIAM-475Z	E CAP.	4.7μF 50V M
C1976	QETNLIAM-227Z	E CAP.	220μF 25V M
C1977	QETNLIAM-227Z	E CAP.	220μF 16V M
C1978	QETNLIAM-227Z	E CAP.	220μF 25V M
C1979	QETNLIAM-227Z	E CAP.	220μF 10V M
△ C1991	QCZ9079-102	C CAP.	1000pFAC250V M
△ C1992	QCZ9079-102	C CAP.	1000pFAC250V M
△ C1993	QCZ9079-222	C CAP.	2200pFAC250V M

TRANSFORMER

T1501	QQR1244-001	DRIVE TRANSF.
△ T1522	QQH0131-001	F.B.TRANSF.
△ T1921	QQS0161-001	SW TRANSF.

COIL

L1001	QQL244K-8R2Z	COIL	8.2μH K
L1101	QQL244J-2R2Z	COIL	2.2μH J
L1103	QQL244K-8R2Z	COIL	8.2μH K
L1551	QQL2034-240	INDUCTOR	
L1701	QQL244J-5R6Z	COIL	5.6μH J
L1941	QQL26AK-820Z	COIL	82μH K
L1942	QQL244J-4R7Z	INDUCTOR	
L1943	QQL244J-4R7Z	INDUCTOR	

Symbol No.	Part No.	Part Name	Description
------------	----------	-----------	-------------

DIODE

D1001	MTZJ33A-T2	ZENER DIODE	
D1102	MA859-T2	SI DIODE	
D1301	MTZJ9.1B-T2	ZENER DIODE	
D1302	MTZJ9.1B-T2	ZENER DIODE	
D1305	AK04-T2	SB DIODE	
D1306	QRE121J-121Y	C R	120Ω 1/2W J
D1341	MA111-X	SI DIODE	
D1421	MTZJ75-T2	ZENER DIODE	
D1423	1SR124-400A-T2	SI DIODE	
D1425	MA111-X	SI DIODE	
D1427	MTZJ27B-T2	ZENER DIODE	
D1501	MTZJ6.8C-T2	ZENER DIODE	
D1551	RGP10J-5025-T3	SI DIODE	
D1552	RGP10J-5025-T3	SI DIODE	
D1553	MTZJ9.1B-T2	ZENER DIODE	
D1554	MA111-X	SI DIODE	
D1557	1SR124-400A-T2	SI DIODE	
D1571	MTZJ7.5S-T2	ZENER DIODE	
D1581	MTZJ20B-T2	ZENER DIODE	
D1582	RGP10J-5025-T3	SI DIODE	
D1651	MA111-X	SI DIODE	
D1652	MTZJ12C-T2	ZENER DIODE	
D1653	MA111-X	SI DIODE	
D1654	MTZJ12C-T2	ZENER DIODE	
D1655	MA111-X	SI DIODE	
D1656	MA111-X	SI DIODE	
D1657	MA111-X	SI DIODE	
D1701	MA111-X	SI DIODE	
D1704	SLR-342VR-T16	LED	
D1705	SLR-342DU-T16	LED	
D1707	MA111-X	SI DIODE	
D1731	MA111-X	SI DIODE	
△ D1901	G258A60	BRIDGE DIODE	
D1921	RGP10J-5025-T3	SI DIODE	
D1925	RGP10J-5025-T3	SI DIODE	
D1927	MTZJ36A-T2	ZENER DIODE	
D1928	MTZJ3.3A-T2	ZENER DIODE	
D1929	MTZJ3.3A-T2	ZENER DIODE	
D1930	RGP10M-5010-T3	SI DIODE	
D1931	MA111-X	SI DIODE	
D1933	MTZJ16C-T2	ZENER DIODE	
D1941	RU3M-LFC4	SI DIODE	
D1942	RU3M-LFC4	SI DIODE	
D1943	RGP10J-5025-T3	SI DIODE	
D1982	MA111-X	SI DIODE	
D1983	MA111-X	SI DIODE	

TRANSISTOR

Q1102	2SC9083/L-P/-T	SI TRANSISTOR	
Q1103	UN2212-X	DIGI TRANSISTOR	
Q1161	2SD601A/QR/-X	SI TRANSISTOR	
Q1301	2SB709A/QR/-X	SI TRANSISTOR	
Q1302	2SD601A/QR/-X	SI TRANSISTOR	
Q1351	STC344-T	SI TRANSISTOR	
Q1352	STC344-T	SI TRANSISTOR	
Q1353	STC344-T	SI TRANSISTOR	
Q1401	DTC124ESA-T	DIGI TRANSISTOR	
Q1402	2SD601A/QR/-X	SI TRANSISTOR	
Q1403	2SD601A/QR/-X	SI TRANSISTOR	
Q1404	2SD601A/QR/-X	SI TRANSISTOR	
Q1521	2SC2655/Y/-T	SI TRANSISTOR	
△ Q1522	2SD2627-YB11	POWER TRANSISTOR	H. OUT
Q1571	2SA1208/ST/Z1-T	SI TRANSISTOR	
Q1572	2SD601A/QR/-X	SI TRANSISTOR	
Q1651	2SD601A/QR/-X	SI TRANSISTOR	
Q1652	2SD601A/QR/-X	SI TRANSISTOR	
Q1653	2SB709A/QR/-X	SI TRANSISTOR	
Q1702	2SD601A/QR/-X	SI TRANSISTOR	
Q1703	2SD601A/QR/-X	SI TRANSISTOR	
Q1708	UN2212-X	DIGI TRANSISTOR	
Q1709	2SB709A/QR/-X	SI TRANSISTOR	
Q1803	2SC1815/YG/-T	SI TRANSISTOR	
Q1804	2SD601A/QR/-X	SI TRANSISTOR	
Q1974	2SA966/OY/-T	SI TRANSISTOR	
Q1975	UN2212-X	DIGI TRANSISTOR	

[AV-21FMG3B]

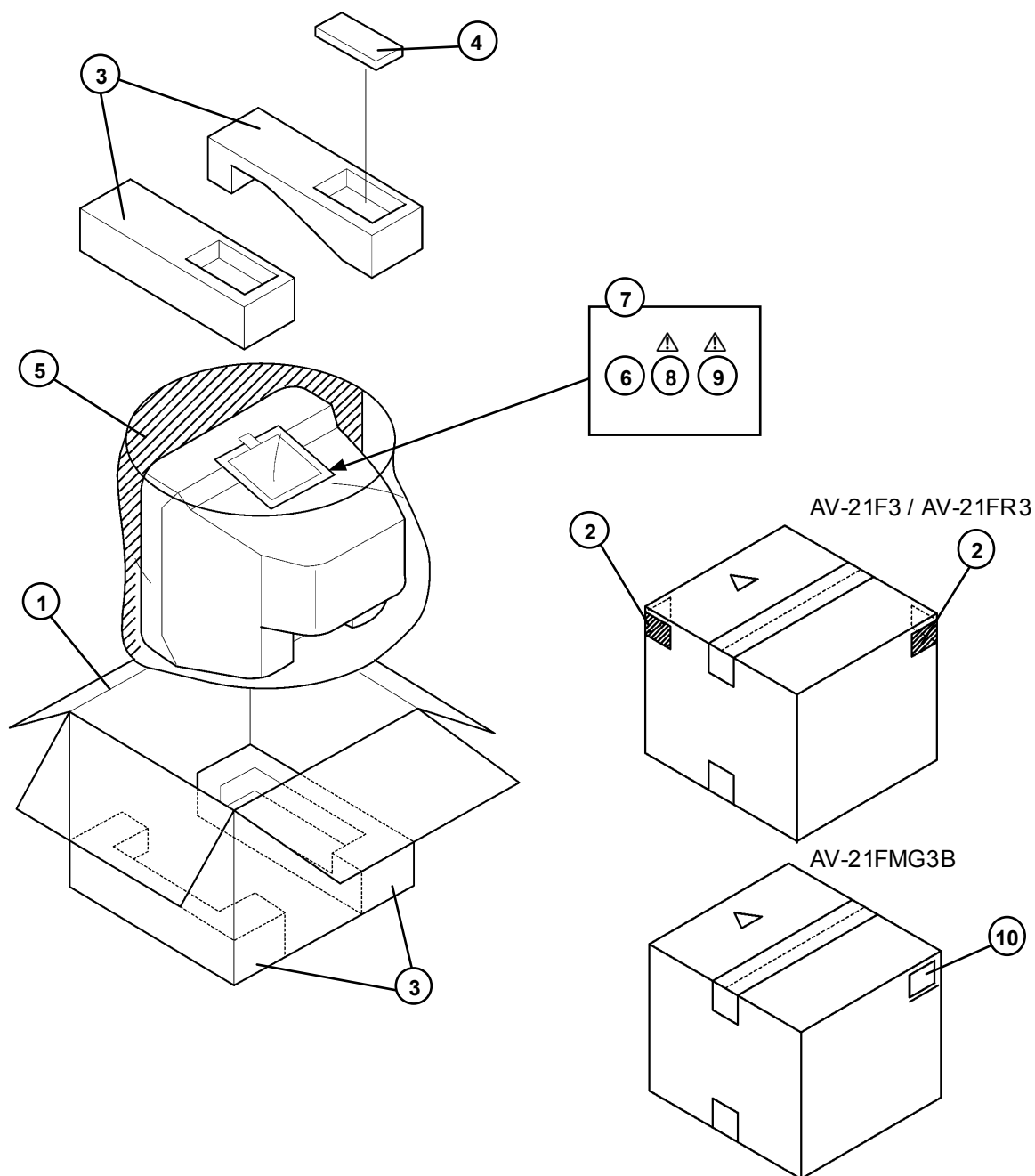
△ Symbol No.	Part No.	Part Name	Description
I C			
	IC1301	NN5198K	I C
	IC1421	AN5522	I C
	IC1651	AN5265	I C
△	IC1701	MN1873287JJ1	I C(MCU)
	IC1702	AT24C08-21DMG3	I C (SERVICE)
	IC1703	L78L05E-MA	I C
	IC1704	PIC-47143SY	IR DETECT UNIT
△	IC1921	STR-W5753A/F5	I C
	IC1971	BA17809T	I C
	IC1972	BA17805T	I C
OTHERS			
		LC30114-001C-H	LED HOLDER
		CM35921-005-H	CDS HOLDER
△	CF1161	QAX0642-001Z	C FILTER
△	CP1981	ICP-N25-Y	I.C.PROTECT
△	CP1982	ICP-N75-Y	I.C.PROTECT
△	F1901	QMF51E2-3R15J4	FUSE 3.15A
	FC1901	CEM002-001Z	FUSE CLIP (X2)
	FR1557	QRJ146J-2R2X	C R 2.2Ω 1/4W J
	J1002	QNN0384-001	PIN JACK or CEMN065-001
	J1003	QNN0281-003	PIN JACK or CEMN065-002
	J1004	QNN0281-002	PIN JACK
△	J1005	QNS0197-001	3.5 JACK
	K1351	QQR0621-002Z	FERRITE BEADS
	K1421	QQR1113-001Z	FERRITE BEADS
	K1941	QQR1113-001Z	FERRITE BEADS
	K1942	QQR1113-001Z	FERRITE BEADS
	K1943	QQR1113-001Z	FERRITE BEADS
△	LF1901	QQR0527-002	LINE FILTER
	PC1701	P1241-04	PHOTO CONDUCTOR
	S1701	QSW0619-003Z	TACT SWITCH VOL+
	S1702	QSW0619-003Z	TACT SWITCH VOL-
	S1703	QSW0619-003Z	TACT SWITCH CH+
	S1704	QSW0619-003Z	TACT SWITCH CH-
	S1705	QSW0619-003Z	TACT SWITCH MENU
△	S1901	QSW0750-001	PUSH SWITCH POWER SW
	SF1102	QAX0731-001	SAW FILTER
	SF1122	QAX0735-001	SAW FILTER
△	SK1351	QNZ0537-001	CRT SOCKET or QNZ0536-001
△	TH1901	QAD0121-9R0	THERMISTOR or QAD0119-9R0
△	TU1001	QAU0282-001	TUNER
△	VA1901	ERZV10V621CS	VARISTOR or QAF0052-621
△	X1301	QAX0705-001Z	CRYSTAL
	X1302	CE41651-001Z	X-TAL
	X1701	QAX0307-001	C RESONATOR

AV-21F3
AV-21FR3
AV-21FMG3B

PACKING PARTS LIST

△ Ref.No.	Part No.	Part Name	Description
AV-21F3			
1	GG10056-067A-H	P CASE	
2	GG20012-001A-H	CORNER LABEL	(×2)
3	LC10516-002A-H	CUSHION ASSY	4pcs in 1set
4	RM-C364GY-1H	RC HAND PIECE	
5	CP30967-003-H	POLY BAG	or CP30967-005-H
6	R6PY/2S	BATTERY	(×2)
7	CP30966-001-H	POLY BAG	
△ 8	LCT1188-001A-H	INST BOOK	
△ 9	LCT1189-001A-H	DIGEST MANUAL	
AV-21FR3			
1	GG10056-067A-H	P CASE	
2	GG20012-001A-H	CORNER LABEL	(×2)
3	LC10516-002A-H	CUSHION ASSY	4pcs in 1set
4	RM-C90-1H	RC HAND PIECE	
5	CP30967-003-H	POLY BAG	or CP30967-005-H
6	R6PY/2S	BATTERY	(X2)
7	CP30966-001-H	POLY BAG	
△ 8	LCT1188-001A-H	INST BOOK	
△ 9	LCT1189-001A-H	DIGEST MANUAL	
AV-21FMG3B			
1	GG10056-067A-H	P CASE	
3	LC10516-002A-H	CUSHION ASSY	4pcs in 1set
4	RM-C364-1H	RC HAND PIECE	
5	CP30967-003-H	POLY BAG	or CP30967-005-H
6	R6PY/2S	BATTERY	(X2)
7	CP30966-001-H	POLY BAG	
△ 8	LCT1188-001A-H	INST BOOK	
△ 9	LCT1189-001A-H	DIGEST MANUAL	
10	CM47385-00B-H	POS,SERIAL LABEL	

PACKING





JVC

VICTOR COMPANY OF JAPAN, LIMITED

HOME AV NETWORK BUSINESS UNIT 12, 3-chome, Moriya-cho, Kanagawa-ku, Yokohama, Kanagawa-prefecture, 221-8528, Japan

AV21F3-H
AV21FR3-H
AV21FMG3B-H



VP 0206
DP7059